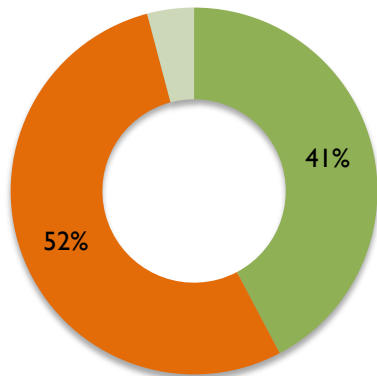




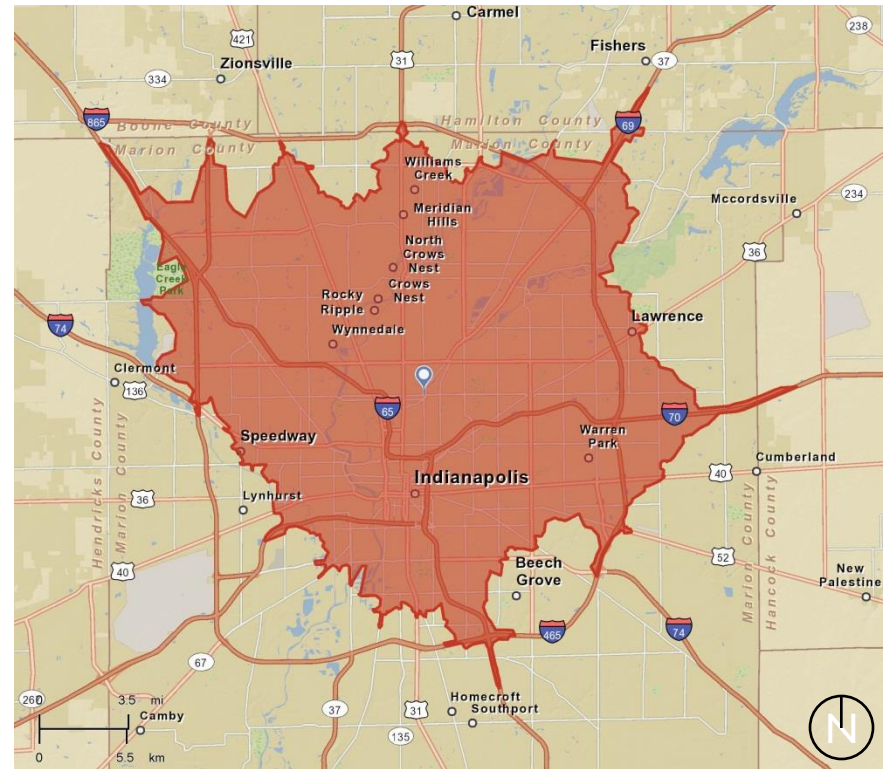
TEMPLE HERITAGE CENTER

Location – Mapleton-Fall Creek

A shorter commute is a priority for many residents. MFC is a 15-minute drive from all of Indianapolis' major employment centers, all of its major universities, as well as its sporting and entertainment districts.



- Marion County**
- Houses are far apart / longer commute
 - Houses are close / shorter commute
 - Unsure



15-Minute Drive

Q: Would you prefer: A neighborhood where houses are built on larger lots and you have a longer commute to work, or where houses are built close together on smaller lots and you have a shorter commute?

Sources: 2012 MIBOR Community Preferences Survey, ESRI

Mapleton-Fall Creek - Investments

The City of Indianapolis has been investing in the area around Fall Creek, including road, bridge, trail and CSO work.

- Fall Creek Trail extension connecting Monon to Central Ave.: **\$1.25 million**
- Illinois St Bridge over Fall Creek: **\$3.5 million** rehab
- Meridian St Bridge over Fall Creek: **\$2.5 million** rehab
- Long Term Control Plan for Sewer overflows: **\$1.7 billion**



Sources: Indianapolis Dept. of Public Works, photo: urbanindy.com

Recent Residential Investment



Before photo of 3028 Park Avenue



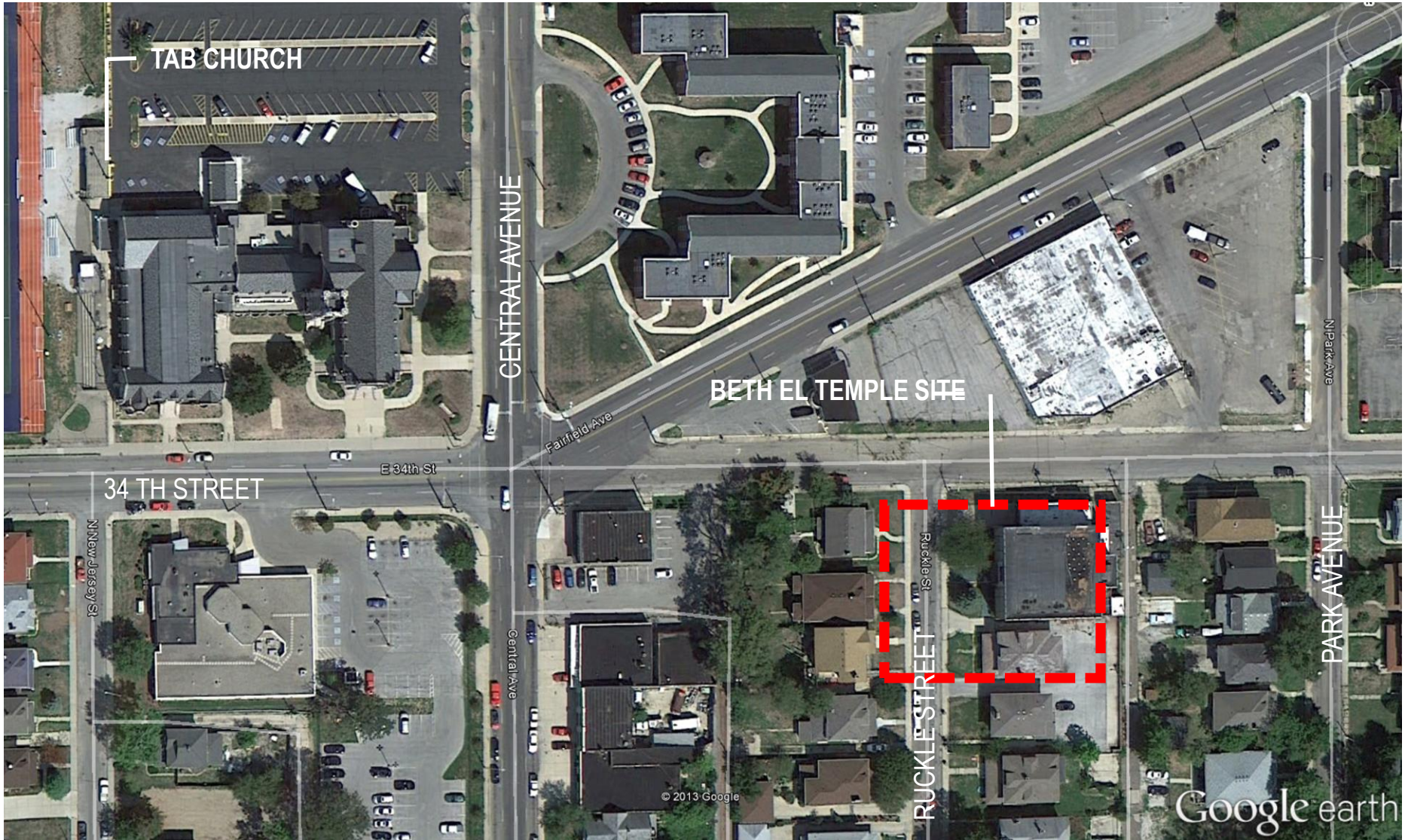
After photo of 3028 Park Avenue

Since 2009

- Total LISC Investment **\$11,713,810**
- Total Leverage (inc. NSP) **\$41,709,639**
- Housing Units Developed **33**
- Square Feet Improved **28,400**

Mid-North Quality of Life Area





TAB CHURCH

CENTRAL AVENUE

BETH EL TEMPLE SITE

34 TH STREET

E 34th St

Fairfield Ave

N New Jersey St

Central Ave

RUCKLEE STREET

PARK AVENUE

© 2013 Google

Google earth

TEMPLE HERITAGE CENTER
INDIANAPOLIS, INDIANA USA

Aerial View

**BROWNING
DAY MULLINS
DIERDORF
ARCHITECTS**

THE BUILDING TIMELINE

Oldest Remaining Synagogue

- Built in 1924 and Dedicated 1925

Architects: Vonnegut, Bohn, Mueller

- Congregation Beth El-Zedeck until 1958
- Bnai Torah Congregation until 1967
- Crusaders for Christ in the 1970's & 1980's
- Deeper Life Church until 2010



“Imposing Structure of rugged simplicity suggestive of strength and endurance”

“Massive brick structure, trimmed in Bedford stone... of modern design, marked by the flat roof and plain walled areas with ornamentation sparingly used and judiciously placed.

“The tannish stony brick facing is a pleasing color to the eye and stands out.”

“Magnificent structure situated in one of the most exclusive sections of Indianapolis”

TEMPLE HERITAGE CENTER
INDIANAPOLIS, INDIANA USA

Dedicated December 11, 1925

Designed by Vonnegut,
Bohner, Mueller

**BROWNING
DAY MULLINS
DIERDORF
ARCHITECTS**



TEMPLE HERITAGE CENTER
INDIANAPOLIS, INDIANA USA

1958

BROWNING
DAY MULLINS
DIERDORF
ARCHITECTS

MEMORIES OF ASSEMBLY & CELEBRATIONS



1946



1930's



1957



1960's

STORIES – BERNIE'S WEDDING



1954

**BROWNING
DAY MULLINS
DIERDORF
ARCHITECTS**



RON'S Parents Anniversary

**BROWNING
DAY MULLINS
DIERDORF
ARCHITECTS**

FROM THE SOUTH SIDE



Kraft Bakery



Philip Kraft & son Gerald Kraft



Philip Kraft

Credit: Neighborhood of Saturdays



Eskanazi Mordoh Produce



Shapiro's Deli



Credit: Neighborhood of Saturdays



Credit: Neighborhood of Saturdays

By 1932 – 65% of Jewish Community on North Side

Kirshbaum
Community Center

23rd & Meridian

1920's

Jewish Educational
Association

3456 N. Central

1945

Borinstein Home for
the Aged

3516 N. Central

1938

Central Hebrew
Congregation

21st & Central

1923

Indianapolis Hebrew
Congregation

10th & Delaware

Until 1958

COMMUNITY SHAPERS & LEADERS



Samuel A. Katz, rabbi of Congre-



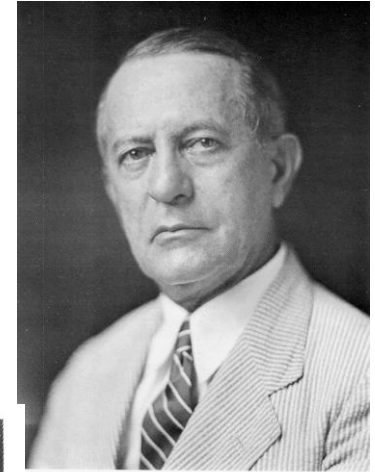
Sarah Goodman



Rabbi Steinberg



Isaac Elhanan Neustadt, Lithua-



G. A. Efromson, business and civic leader, president of Real Silk



Jack Goodman



Morris Strauss (left) and Louis Borinstein examining a copy of the *Indiana Jewish Chronicle* in 1946. Strauss published this, the state's first Jewish newspaper, from 1923 to 1969. [IHS]



Rabbi Feuerlicht - IHC



Rabbi Fruchter – Bnai Torah

Credit: Judith Endleman "The Jewish Community of Indianapolis"

MEMORIES & STORIES



Credit: Judith Endleman "The Jewish Community of Indianapolis"

FAMILIES



Hannuka 1925 - 3 Day Celebration

INDIANAPOLIS, INDIANA, WEDNESDAY, DECEMBER 11, 1925

Vol. 9, No. 34 Entered office at Indianapolis, Ind., under the Act of March 3, 1879.

INDIANAPOLIS, IND., DECEMBER 11, 1925

Per Year \$3.00; Per Copy

NEW REGULATIONS ON SALE OF SACRAMENTAL WINES

Permits Cut to One Gallon Per Adult a Year.

DISTRIBUTION PLANS GIVEN

WASHINGTON, Dec. 2.—(J. T. A.) The effort of General Lincoln C. Andrews, Assistant Secretary of the treasury in charge of prohibition enforcement, to reach an understanding with Jewish Rabbis on curtailing the sale of sacramental wine and its alleged illegal distribution, reached a conclusion today, when the Commissioner of Internal Revenue promulgated an order of the Secretary of the Treasury to prohibition administrators containing new regulations pertaining to the withdrawal of wine for religious purposes.

The order and its inclusive regulations were the outcome of conferences between General Andrews and a large number of Rabbis, representing all organizations of their faith. A letter to prohibition administrators, which accompanies the order and was sent to the press this evening, shows that the basic arrangement for preventing abuses in the use of sacramental wine is a list of the names of Rabbis who are recognized bona fide persons claiming to be Rabbis applying for permission to purchase sacramental wine, and their names are not on the authorized list, the government officers will investigate the status.

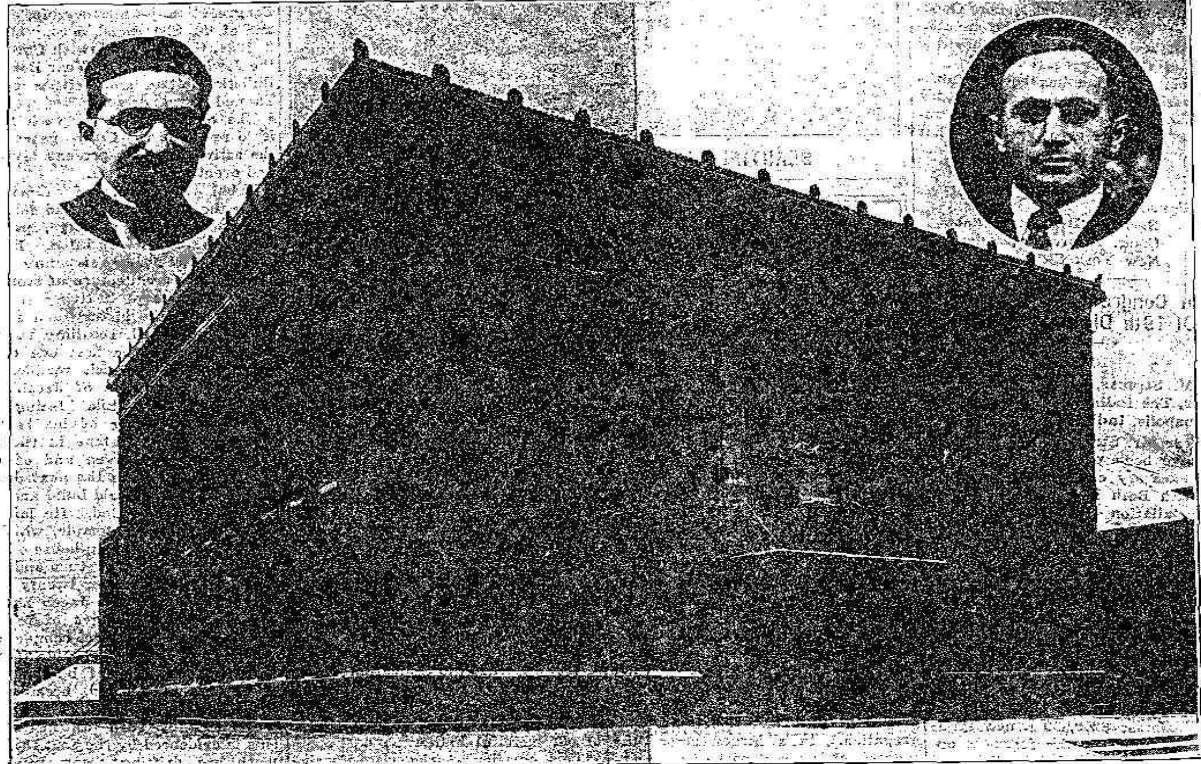
A check is to be placed also on the amount of wine permitted to be withdrawn. General Andrews says in his letter that all the Jewish religious organizations save the ultra-orthodox have indicated that one gallon of wine is sufficient for a year's supply for sacramental uses.

The Rabbis state that the ordinary American domestic wine is satisfactory for sacramental purposes.

View of this, prohibition officers will investigate when application is made for the withdrawal of foreign wines.

Letter of instructions. The letter of the Assistant Secretary of the Treasury...

Chanukah Will Mark Dedication of Leading Orthodox Synagogue of Indiana and Installation of its Rabbi



Coincident with Chanukah, the Festival of Lights or Dedication, Beth El Congregation will dedicate its new synagogue at 34th and Ruckle Streets, shown above, with an elaborate program starting with the Friday evening services, December 11th, and culminating with a banquet Sunday evening, December 13th. (The complete program is published on page 3 of this issue.)

At the upper left hand corner is a

picture of Rabbi Isidore Goodman, who will be installed in the Friday evening service and will make several talks. Mr. Jack A. Goodman, in the upper right hand corner insert, is President of Beth El Synagogue. He will deliver the acceptance and installation address Sunday afternoon, December 13th, when Mr. Louis Grossman, chairman of the Dedication Committee, will present him with the key of the synagogue.

Addresses of such prominent men as Governor Ed. Jackson, Mayor Samuel Shank, Rev. P. S. C. Wicks, pastor of All Soul's Unitarian church, Rabbi Morris M. Feuerlicht, of the Indianapolis Hebrew Congregation, and Rabbi Herbert S. Goldstein, of New York City, President of the Orthodox Jewish Congregations of America, will feature the celebration.

A special dedication hymn written

by Samuel A. Frommer, with music by Rev. M. Fortnov, will be sung Sunday afternoon by the Beth El Choir, led by Abe Barskin.

At 7:30 o'clock Sunday evening a banquet will be held. Mayor Lew Shank will be the principal speaker. Other talks will be made by members of the congregation. It is expected that the largest crowd that ever attended a Jewish celebration will be present at the various services.

I. O. B. B. DECIDES ON RELIEF FOR JEWS OF DAMASCUS

Executive Com. Also Agrees to Co-operation With Both Drift

ENDORSES WORLD COURT

CINCINNATI, O., Dec. 7.—(J. T. A.)—The first aid for suffering the recent bombardment of Damascus will come from America, according to a decision of the executive committee of the Independent Order B'nai B'rith which began its two annual meeting here yesterday.

The committee voted approving the action of Alfred M. Cohen, president of the organization, in seeking financial help to Damascus Jewry on receipt recently of a cable from the Damascus Lodge of the I. O. B. B. describing their plight.

The executive committee meeting is the first held under the presidency of Mr. Cohen, who was elected last summer. For the next five Cincinnati will be the center of national and international action of the I. O. B. B.

The committee was unanimous in its support of the sending by Mr. Cohen of delegates to the Philadelphia and Baltimore conferences. Mr. Cohen had taken the stand that the B'nai B'rith should co-operate with the Philadelphia group, at Baltimore conference called by Zionists, Henry Monsky, of Omaha, and Judge A. B. Fry of St. Louis, led in an interesting discussion of the question. At the conclusion, a resolution was adopted pressing the B'nai B'rith's desiring close co-operation to all Jewish organizations and endorsing Cohen's action. A resolution in the support of all B'nai B'rith for the world court movement was adopted. It is expected that the largest crowd that ever attended a Jewish celebration will be present at the various services.

Jewish Education Association

Rabbi Martin Ziefonka, of El

DEDICATION

We behold at Beth El a Synagogue building that is a delight to the senses and an encouragement to the soul. But we may not sit back and be content with this great achievement, for the work of our synagogue must go higher and higher....

We need to be quite conscious of the sacred trust we have inherited from our ancestors. We need to become aware of our obligations in preserving the heritage and passing it on to our generations – undimmed, undiminished, undefiled.



Jack Goodman, May 5, 1924



CONGREGATION

BETH EL

5684

1924



TEMPLE HERITAGE CENTER
INDIANAPOLIS, INDIANA USA

EXTERIOR

BROWNING
DAY MULLINS
DIERDORF
ARCHITECTS



TEMPLE HERITAGE CENTER
INDIANAPOLIS, INDIANA USA

EXTERIOR

**BROWNING
DAY MULLINS
DIERDORF
ARCHITECTS**



TEMPLE HERITAGE CENTER
INDIANAPOLIS, INDIANA USA

EXTERIOR

**BROWNING
DAY MULLINS
DIERDORF
ARCHITECTS**



TEMPLE HERITAGE CENTER
INDIANAPOLIS, INDIANA USA

EXTERIOR

**BROWNING
DAY MULLINS
DIERDORF
ARCHITECTS**





AREA #1

**+5700 SF
EXISTING EPDM
SINGLE PLY OVER
BUILT UP ROOF
AND WOOD DECK**

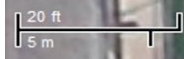
International Life Church

Ruckle St

Ruckle St

Ruckle St

Ruckle St

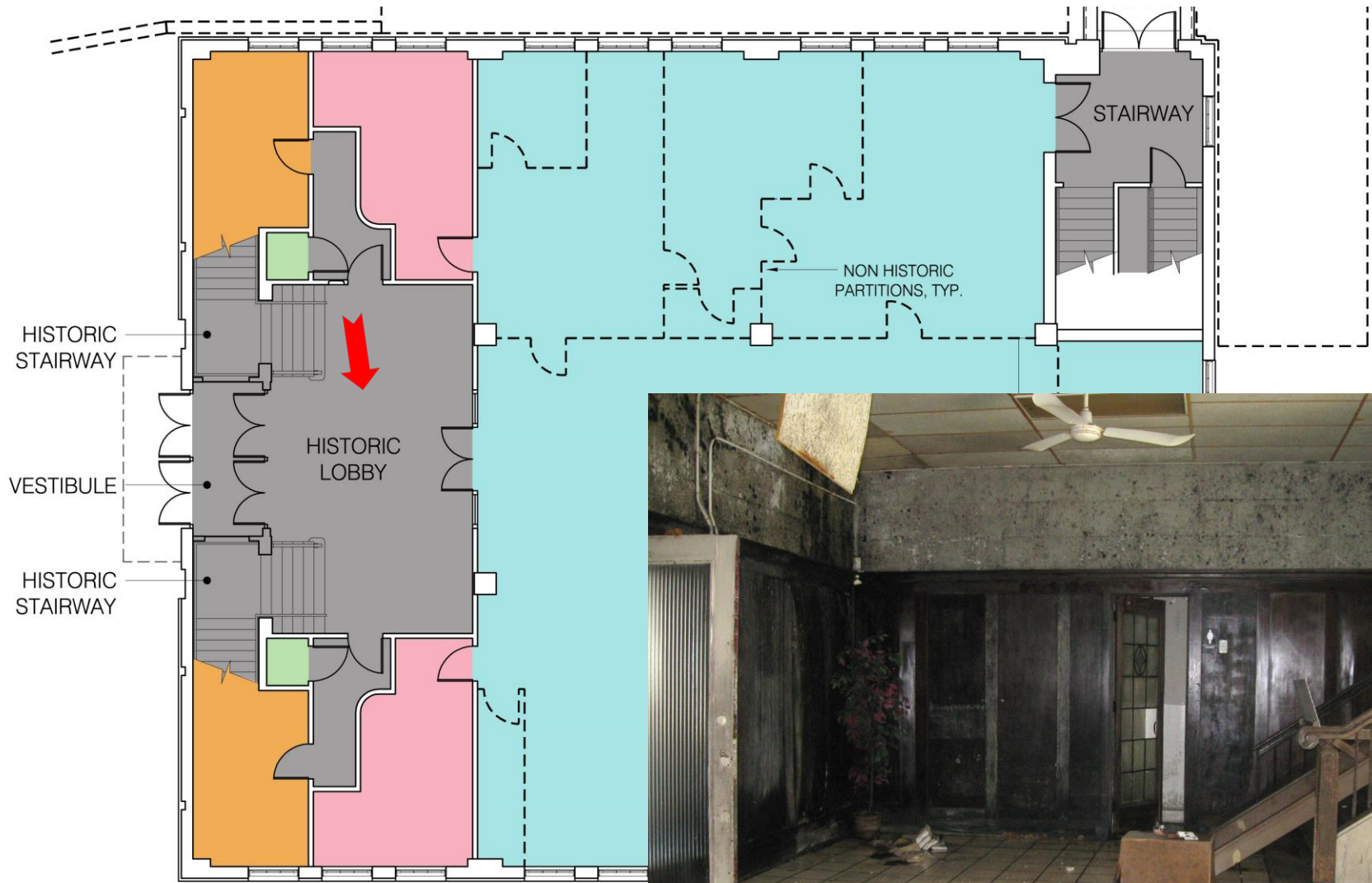




TEMPLE HERITAGE CENTER
INDIANAPOLIS, INDIANA USA

ENTRANCE

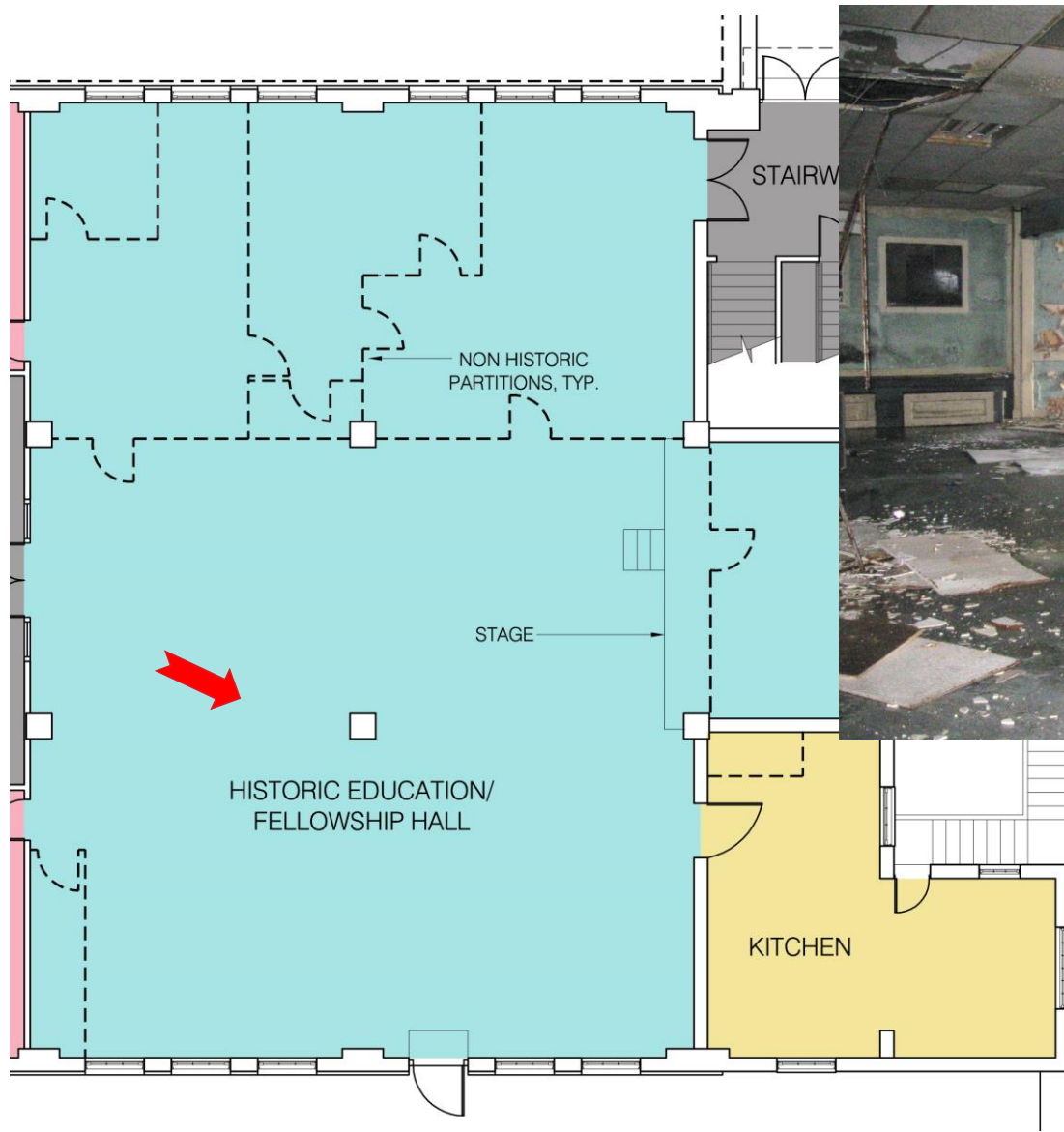
**BROWNING
DAY MULLINS
DIERDORF
ARCHITECTS**





April 25, 2014

**BROWNING
DAY MULLINS
DIERDORF
ARCHITECTS**

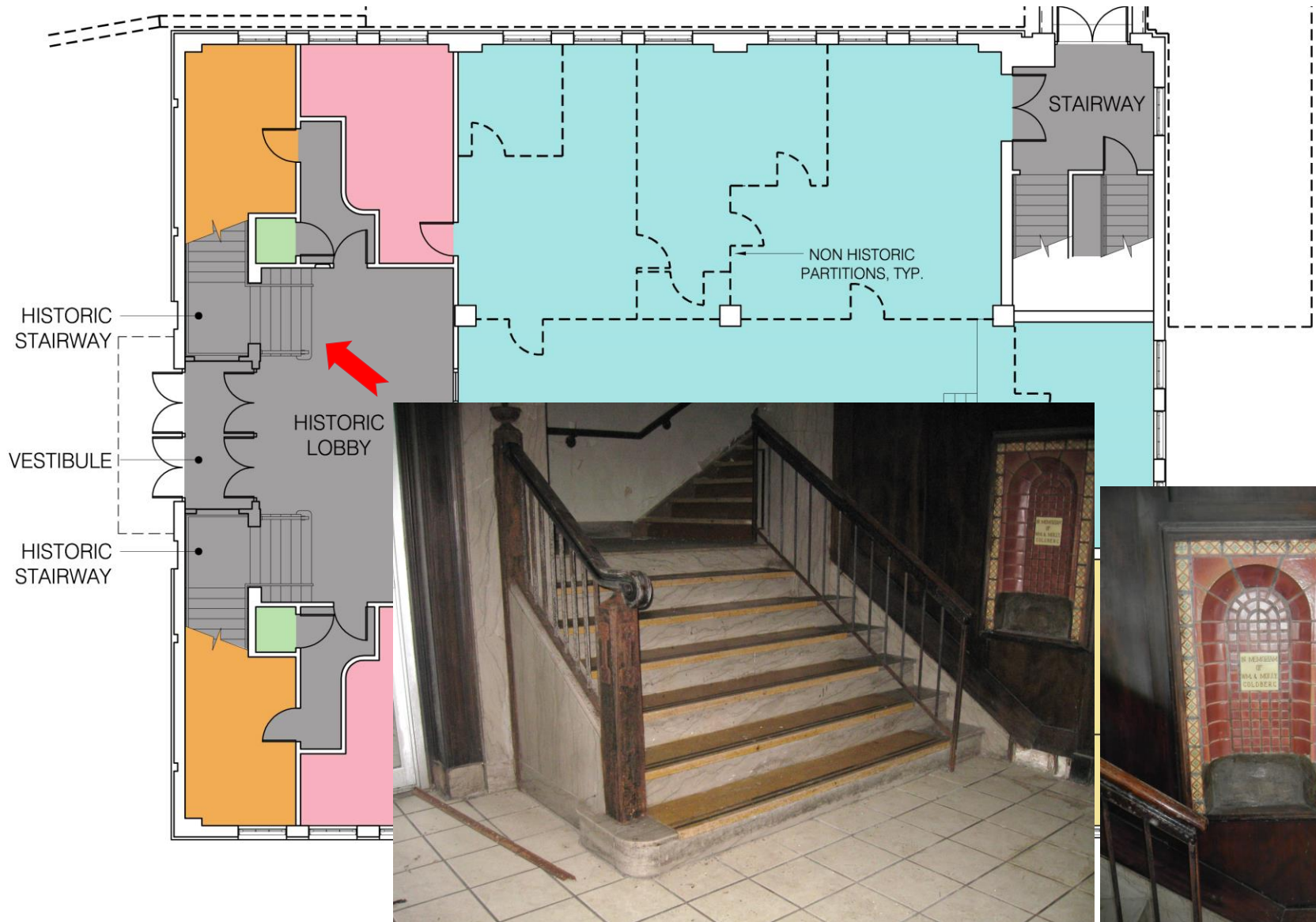




TEMPLE HERITAGE CENTER
INDIANAPOLIS, INDIANA USA

April 25, 2014

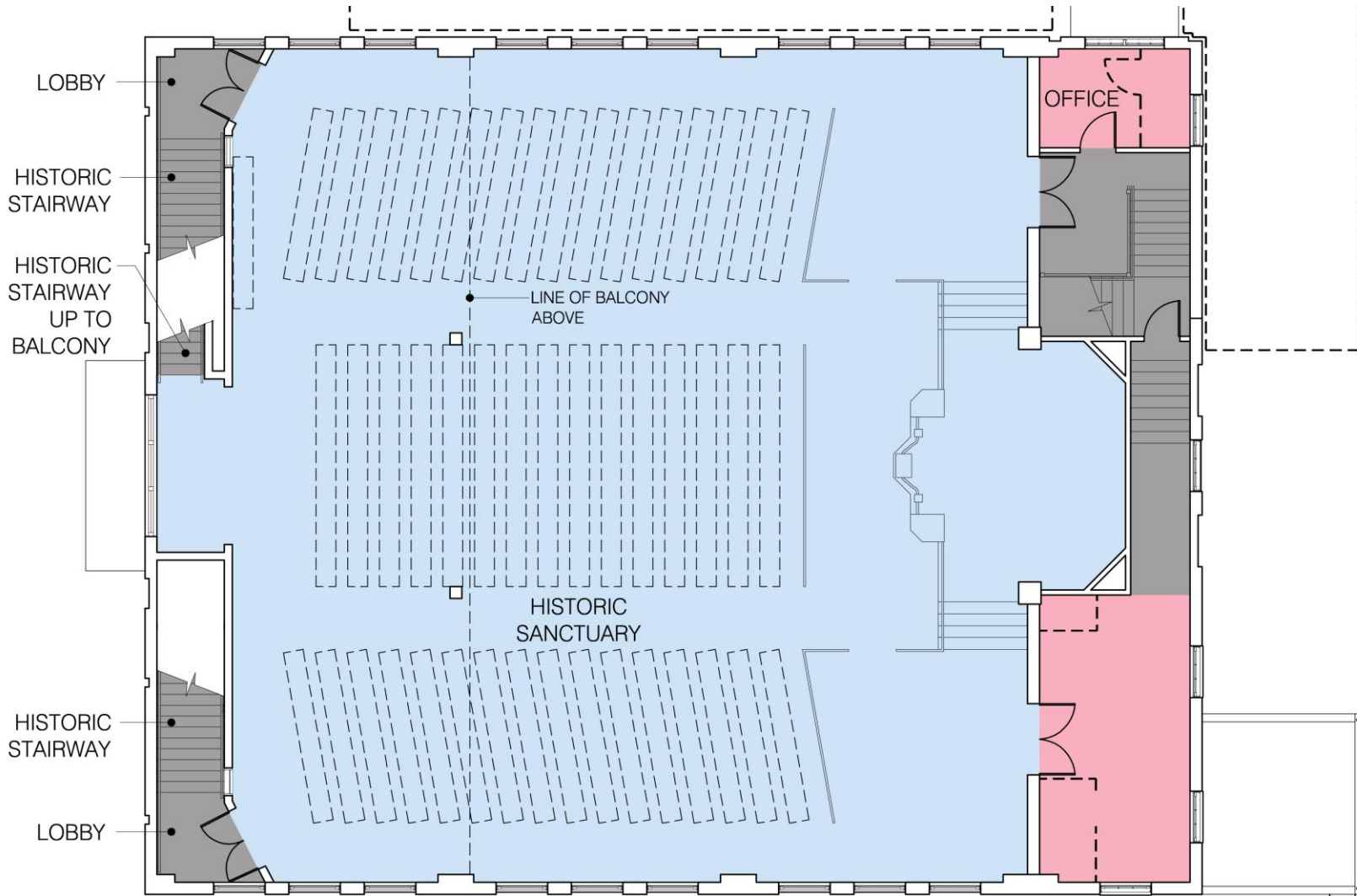
BROWNING
DAY MULLINS
DIERDORF
ARCHITECTS





April 25, 2014

**BROWNING
DAY MULLINS
DIERDORF
ARCHITECTS**

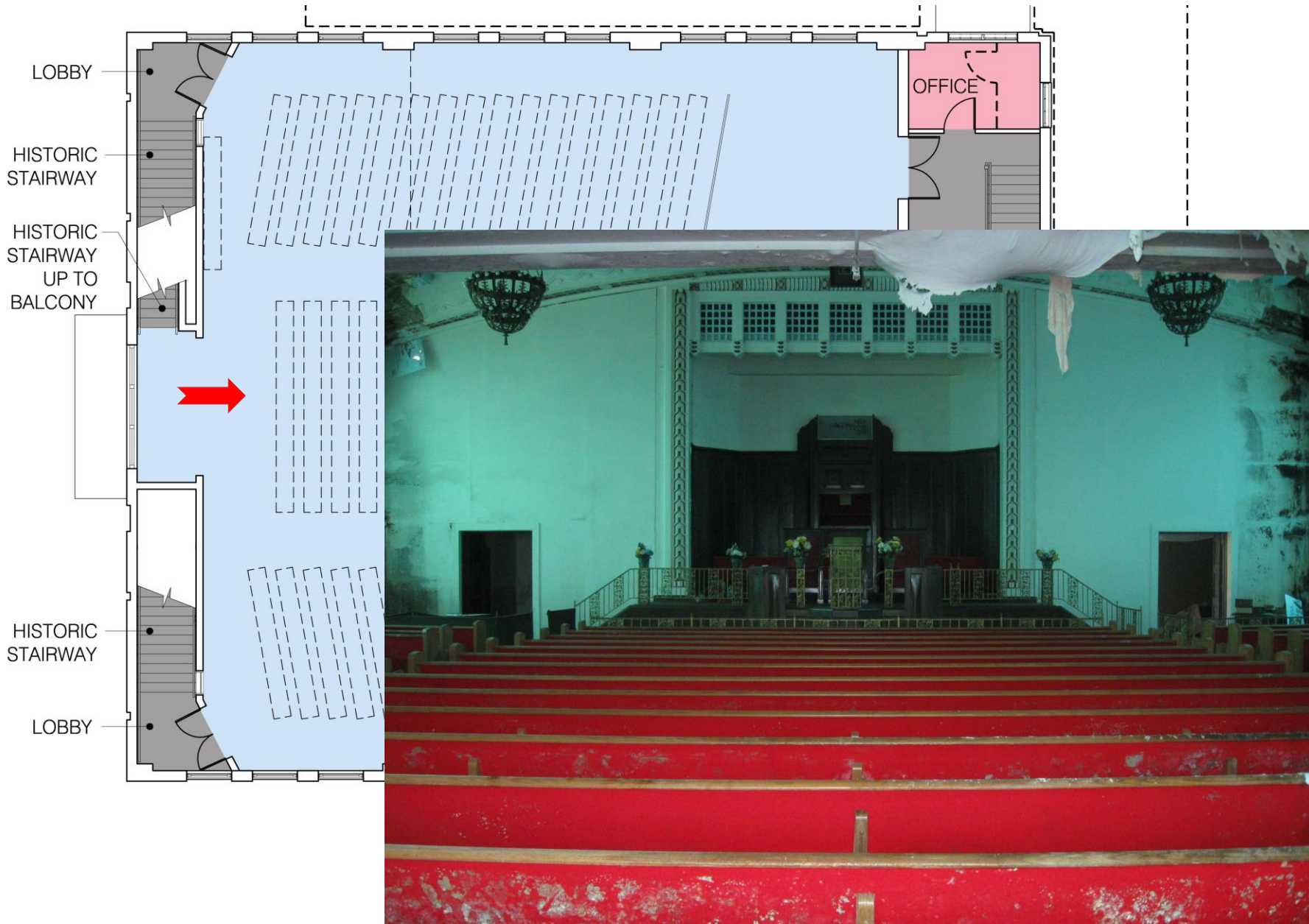


**BROWNING
DAY MULLINS
DIERDORF
ARCHITECTS**

TEMPLE HERITAGE CENTER
INDIANAPOLIS, INDIANA USA

SECOND FLOOR PLAN

**BROWNING
DAY MULLINS
DIERDORF
ARCHITECTS**



TEMPLE HERITAGE CENTER
INDIANAPOLIS, INDIANA USA

Sanctuary

BROWNING
DAY MULLINS
DIERDORF
ARCHITECTS



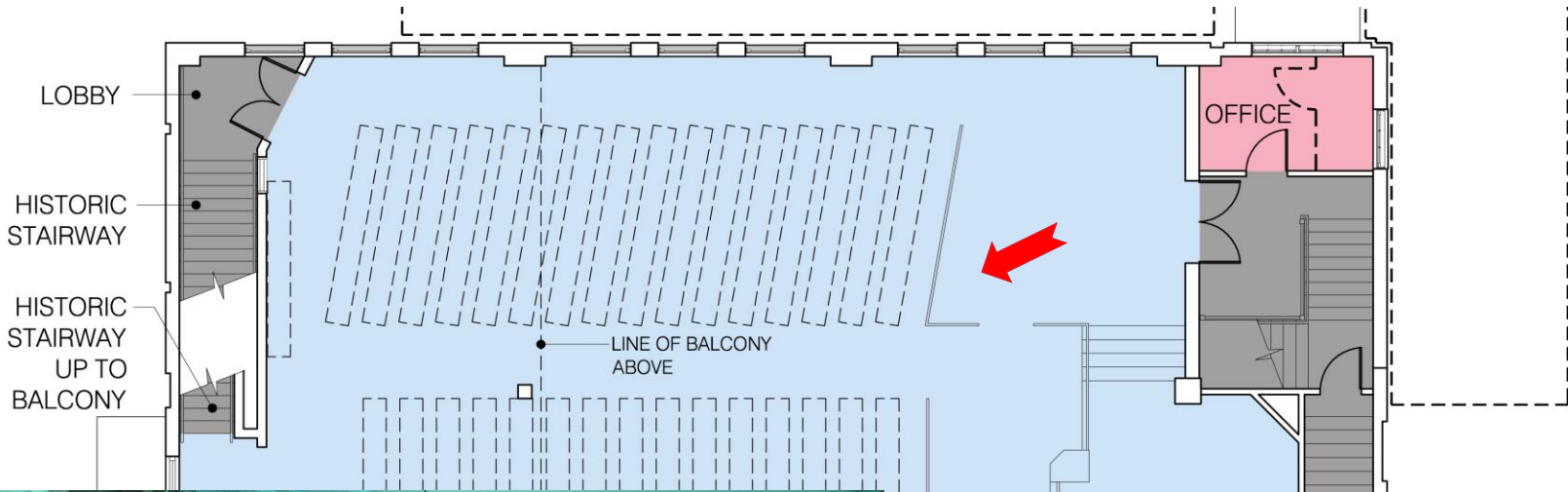
April 25, 2014

**BROWNING
DAY MULLINS
DIERDORF
ARCHITECTS**



Fixtures

**BROWNING
DAY MULLINS
DIERDORF
ARCHITECTS**

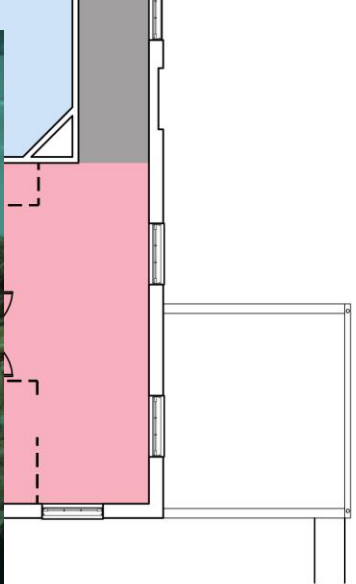
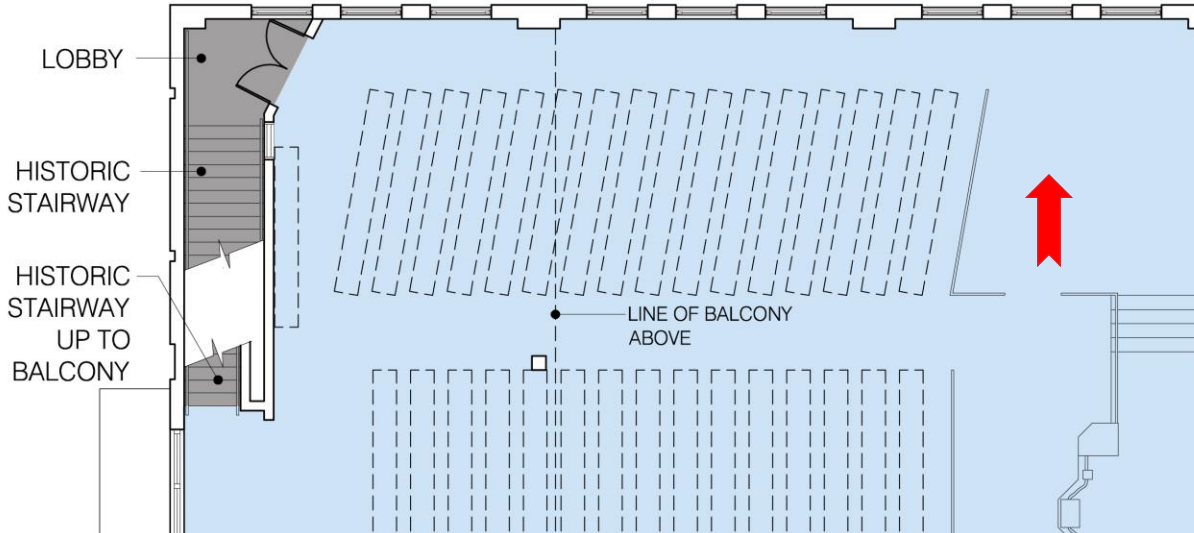


**BROWNING
DAY MULLINS
DIERDORF
ARCHITECTS**

TEMPLE HERITAGE CENTER
INDIANAPOLIS, INDIANA USA

SECOND FLOOR PLAN

**BROWNING
DAY MULLINS
DIERDORF
ARCHITECTS**



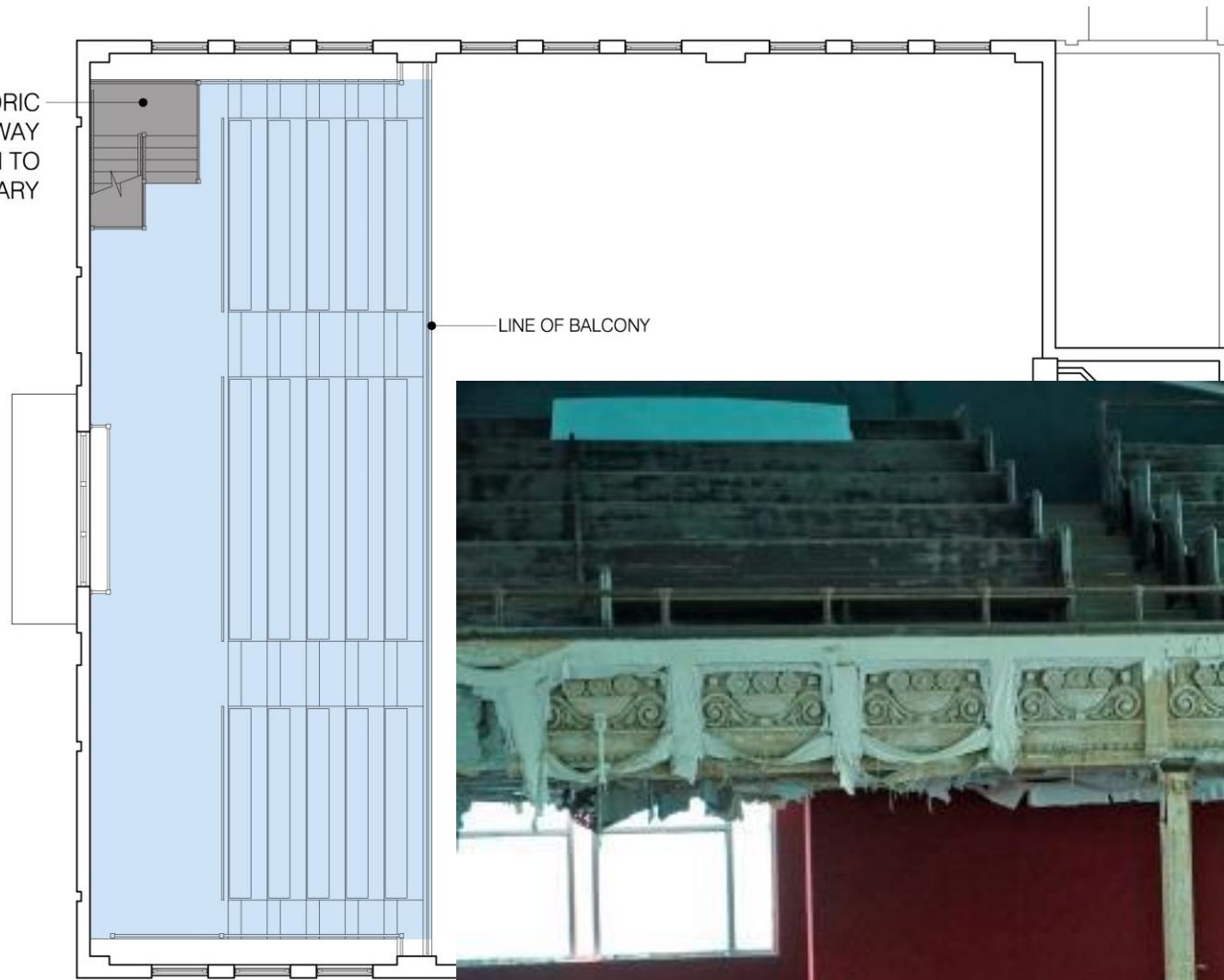
**BROWNING
DAY MULLINS
DIERDORF
ARCHITECTS**

TEMPLE HERITAGE CENTER
INDIANAPOLIS, INDIANA USA

SECOND FLOOR PLAN

**BROWNING
DAY MULLINS
DIERDORF
ARCHITECTS**

HISTORIC
STAIRWAY
DOWN TO
SANCTUARY





Sanctuary

**BROWNING
DAY MULLINS
DIERDORF
ARCHITECTS**



Balcony

**BROWNING
DAY MULLINS
DIERDORF
ARCHITECTS**



Balcony View

**BROWNING
DAY MULLINS
DIERDORF
ARCHITECTS**



April 25, 2014

**BROWNING
DAY MULLINS
DIERDORF
ARCHITECTS**



April 25, 2014

**BROWNING
DAY MULLINS
DIERDORF
ARCHITECTS**



Photo Courtesy of Dean Illingworth

Return to Beth El Temple on Ruckle

October, 2011

**BROWNING
DAY MULLINS
DIERDORF
ARCHITECTS**



TEMPLE HERITAGE CENTER
INDIANAPOLIS, INDIANA USA

VIDEO

**BROWNING
DAY MULLINS
DIERDORF
ARCHITECTS**



NOW WHAT?

**BROWNING
DAY MULLINS
DIERDORF
ARCHITECTS**

TODAY

Partners



INDIANA LANDMARKS



Mapleton-Fall Creek
Development Corporation



Supporters

Beth El-Zedeck Congregation; Tabernacle Presbyterian Church; Jewish Federation of Greater Indianapolis; Indiana Jewish Historical Society; Congregation Shaarey Tefilla; Indianapolis Hebrew Congregation; Indiana Historical Society; Efroymsen Family Fund; Beth El-Zedeck Foundation; Neighborhood Associations, Individuals

SO FAR...

Achievements

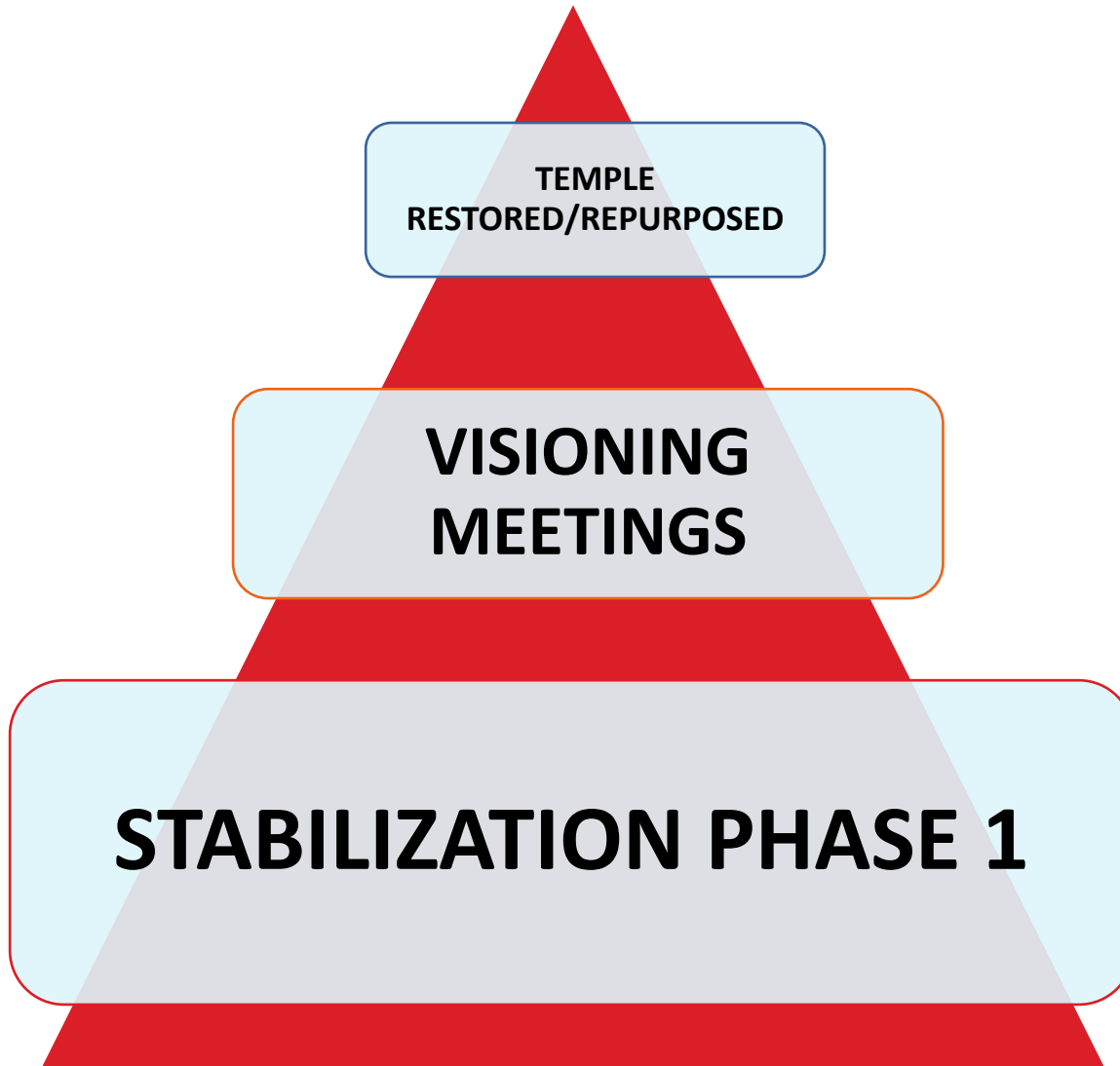
Feasibility Study

Browning Day Mullins Dierdorf

Building Ownership – Indiana Landmarks

Funding for Phase 1 - \$500,000

PLANS...



VISIONING MEETING

January 24, 2014

Participants

Mark Dollase – Indiana Landmarks
Leigh Evans – Mapleton Fall Creek Development Corp.
Tyson Domer – HundredYear Consulting
Jackie Nytes – Indianapolis Public Library
Al Polin – Mapleton Fall Creek Neighborhood Assoc.
Kevin Krulewitch – Indiana Jewish Historical Society
Alan Goldstein – Ice Miller
David Kosene – Kosene & Kosene Development
David Resnick – Katz Sapper Miller
Rabbi Sandy Sasso – Beth El Zedeck Congregation
Rabbi Dennis Sasso – Beth El Zedeck Congregation
Isaiah Kuperstein – Double 8 Foods
Phil Lande – Remax Atlas Group
Ellen Rosenthal – Conner Prairie
Charles Venable – Indianapolis Museum of Art
Lindsey Mintz – Jewish Community Relations Council
Stacy Klingler – Indiana Historical Society
Dean Illingworth – Architect, Homeland Security
Joseph Alpert – J. Solotken & Company
David Warshauer – Barnes & Thornburgh

Vop Osili – City Council Member, Architect
Jonathan Hess – Browning Day Mullins Dierdorf
Marsh Davis – Indiana Landmarks
Terri Coleman – MFCDC; Broadway United Methodist
Sally Cook – Indiana Jewish Historical Society
Joanna Nixon – Efroymsen Family Fund
Anthony Bridgeman – Children’s Museum
William Blomquist – IUPUI School of Liberal Arts
Jay VanSanten – Historic Meridan Park Neighborhood
Duane Ingram – MFCDC
Elee Wood – IUPUI Museum Studies Program
Susan Hyatt – IUPUI Anthropology Department
Joe Simpson – City Council Member
Joyce Moore – Dialogue Today
Dustin Jones - Neighborhood

Facilitators:

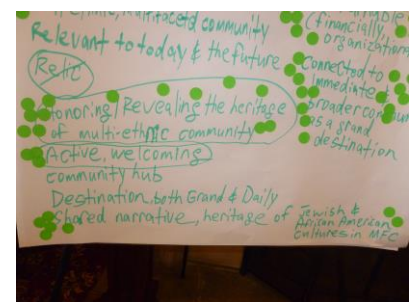
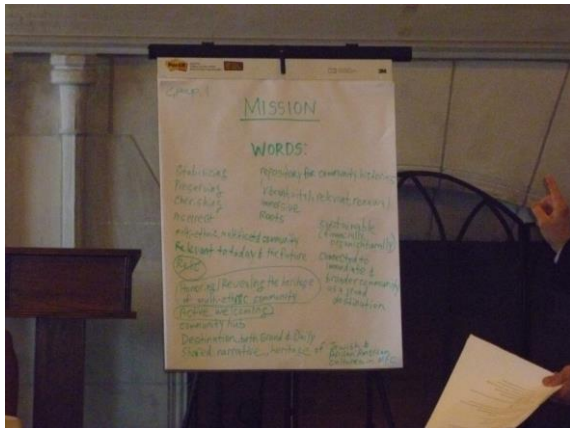
Paul Richard – SmallExhibits.com
Jonathan Young – Browning Day Mullins Dierdorf
Thomas Kraemer – Kraemer Design & Production

VISIONING MEETING

January 24, 2014

Tabernacle Presbyterian Church





VALUES

HONOR DIVERSE MEMORY & CULTURAL HERITAGE

ENGAGE AND LEARN

STRENGTHEN COMMUNITIES VIA COLLABORATION

MISSION

The Temple Heritage Center will play an integral role as an inclusive place to remember, learn, and connect our diverse communities in a spirit of inspired citizenship.

OUTREACH



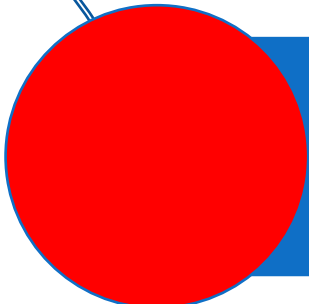
TIMELINE

Summer 2014	Roof and Gutters Complete Continue with Stabilization
September 2014	Raising a total of \$500,000 for Phase 1
December 2014	Title Transfer from Indiana Landmarks to Temple Heritage Center

FUNDRAISING CAMPAIGN

SAVE THIS SACRED SPACE

THE CAMPAIGN FOR THE RUCKLE STREET TEMPLE

A red circle with a thin blue outline and a thin blue line extending from the top-left, positioned to the left of the first blue bar.

\$500,000 – Phase 1

A red circle with a thin blue outline and a thin blue line extending from the bottom-left, positioned to the left of the second blue bar.

\$2.5 Million – Phase 2

VISION

Stabilize the Temple building and stop its decay, as well as reclaim its original elegant historic architecture.

Restore the Temple and honor its history by partnering with like-minded institutions to remember and teach the stories and memories embodied in this sacred place.

Create a collaboration of neighborhoods and faith-based organizations to connect, welcome, and facilitate understanding and tolerance among diverse populations in our city.

“Sacred Trust We Have Inherited...”

“Our Obligation in Preserving the Heritage and Passing it on...”

WE CAN

HONOR THE TEMPLE’S ROOTS AS A PLACE OF FAITH, FELLOWSHIP,
CELEBRATION, GOOD DEEDS, AND COMMUNITY BUILDING

SAVE A PRICELESS CHAPTER OF INDIANAPOLIS HISTORY

PROVIDE A RICH NEW RESOURCE FOR OUR CITY’S FUTURE



Beth-El Temple Adaptive Reuse

Northeast Corner

**BROWNING
DAY MULLINS
DIERDORF
ARCHITECTS**

A VISION

**BROWNING
DAY MULLINS
DIERDORF
ARCHITECTS**



TEMPLE HERITAGE CENTER
INDIANAPOLIS, INDIANA USA

A VISION

**BROWNING
DAY MULLINS
DIERDORF
ARCHITECTS**

JOIN US. SUPPORT US.



Contact:

templeheritagecenter.org

[@Temple_Heritage](https://www.instagram.com/Temple_Heritage)

The BOARD: Joseph Alpert, Mark Dollase, Tyson Domer, Leigh Riley-Evans, Alan Goldstein, David Kosene, Kevin Krulewitch, Isaiah Kuperstein, Phil Lande, Jackie Nytes, Al Polin, David Resnick, Ellen Rosenthal, Rabbi Dennis Sasso, Rabbi Sandy Sasso, Elee (Elizabeth) Wood.