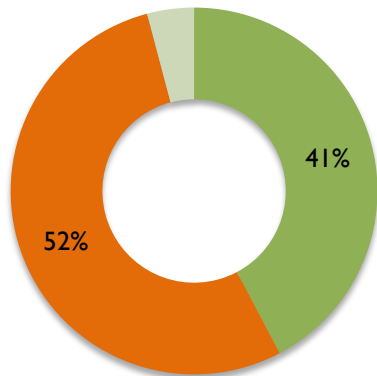




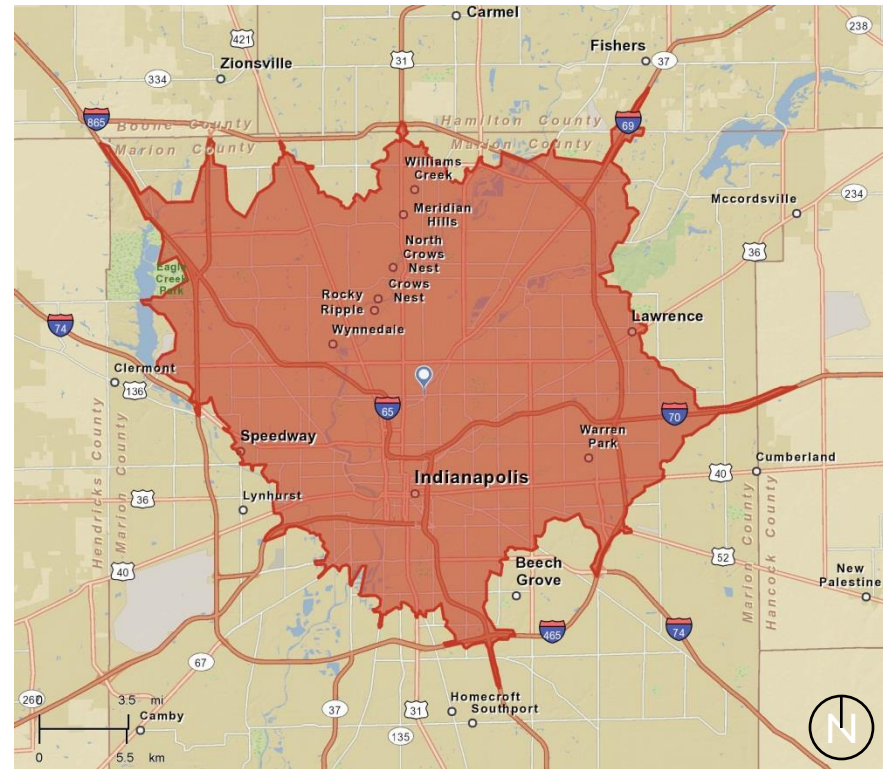
The Temple Heritage Center will play an integral role as an inclusive place to remember, learn, and connect our diverse communities in a spirit of inspired citizenship.

Location – Mapleton Fall Creek

A shorter commute is a priority for many residents. MFC is a 15-minute drive from all of Indianapolis' major employment centers, all of its major universities, as well as its sporting and entertainment districts.



- Marion County**
- Houses are far apart / longer commute
 - Houses are close / shorter commute
 - Unsure



15-Minute Drive

Q: Would you prefer: A neighborhood where houses are built on larger lots and you have a longer commute to work, or where houses are built close together on smaller lots and you have a shorter commute?

Sources: 2012 MIBOR Community Preferences Survey, ESRI

Mapleton Fall Creek - Investments

The City of Indianapolis has been investing in the area around Fall Creek, including road, bridge, trail and CSO work.

- Fall Creek Trail extension connecting Monon to Central Ave.: **\$1.25 million**
- Illinois St Bridge over Fall Creek: **\$3.5 million** rehab
- Meridian St Bridge over Fall Creek: **\$2.5 million** rehab
- Long Term Control Plan for Sewer overflows: **\$1.7 billion**



Sources: Indianapolis Dept. of Public Works, photo: urbanindy.com

Recent Residential Investment



Before photo of 3028 Park Avenue



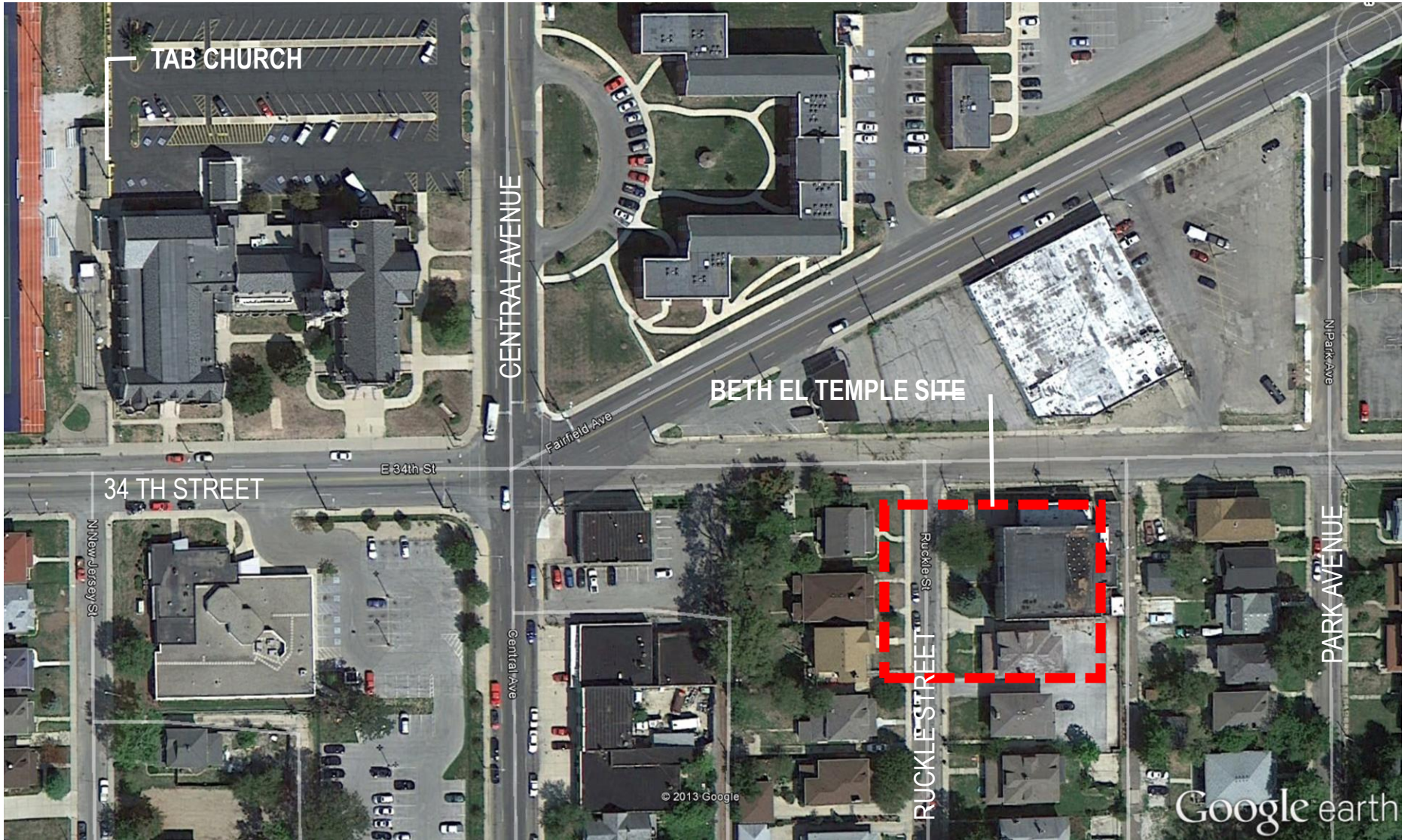
After photo of 3028 Park Avenue

Since 2009

- Total LISC Investment **\$11,713,810**
- Total Leverage (inc. NSP) **\$41,709,639**
- Housing Units Developed **33**
- Square Feet Improved **28,400**

Mid-North Quality of Life Area





TEMPLE HERITAGE CENTER
INDIANAPOLIS, INDIANA USA

Aerial View

**BROWNING
DAY MULLINS
DIERDORF
ARCHITECTS**

THE BUILDING TIMELINE

Oldest Remaining Synagogue

- Built in 1924 and Dedicated 1925

Architects: Vonnegut, Bohn, Mueller

- Congregation Beth El-Zedeck until 1958
- Bnai Torah Congregation until 1967
- Crusaders for Christ in the 1970's & 1980's
- Deeper Life Church until 2010



“Imposing Structure of rugged simplicity suggestive of strength and endurance”

“Massive brick structure, trimmed in Bedford stone... of modern design, marked by the flat roof and plain walled areas with ornamentation sparingly used and judiciously placed.

“The tannish stony brick facing is a pleasing color to the eye and stands out.”

“Magnificent structure situated in one of the most exclusive sections of Indianapolis”

TEMPLE HERITAGE CENTER
INDIANAPOLIS, INDIANA USA

Dedicated December 11, 1925

Designed by Vonnegut,
Bohner, Mueller

**BROWNING
DAY MULLINS
DIERDORF
ARCHITECTS**



TEMPLE HERITAGE CENTER
INDIANAPOLIS, INDIANA USA

1958

BROWNING
DAY MULLINS
DIERDORF
ARCHITECTS

MEMORIES OF LIFE, ASSEMBLY, CELEBRATIONS



1946



1930's



1957



1960's

STORIES – BERNIE'S WEDDING



1954

**BROWNING
DAY MULLINS
DIERDORF
ARCHITECTS**

SOUTH SIDE



Kraft Bakery



Philip Kraft



Credit: Neighborhood of Saturdays



Shapiro's Deli

Credit: Neighborhood of Saturdays

Eskanazi Murdoh Produce



Credit: Neighborhood of Saturdays

By 1932 – 65% of Jewish Community on North Side

Kirshbaum
Community Center

23rd & Meridian

1920's

Jewish Educational
Association

3456 N. Central

1945

Borinstein Home for
the Aged

3516 N. Central

1938

Central Hebrew
Congregation

21st & Central

1923

Indianapolis Hebrew
Congregation

10th & Delaware

Until 1958

COMMUNITY SHAPERS



Samuel A. Katz, rabbi of Congre-



Sarah Goodman



Rabbi Steinberg



Isaac Elhanan Neustadt, Lithua-



G. A. Efrogson, business and civic leader, president of Real Silk



Jack Goodman



Morris Strauss (left) and Louis Borinstein examining a copy of the *Indiana Jewish Chronicle* in 1946. Strauss published this, the state's first Jewish newspaper, from 1923 to 1969. [IHS]



Rabbi Feuerlicht - IHC



Rabbi Fruchter – Bnai Torah

Credit: Judith Endleman "The Jewish Community of Indianapolis"

MEMORIES



Credit: Judith Endleman "The Jewish Community of Indianapolis"

NEW REGULATIONS ON SALE OF SACRAMENTAL WINES

Permits Cut to One Gallon Per Adult a Year.

DISTRIBUTION PLANS GIVEN

WASHINGTON, Dec. 2.—(J. T. A.) The effort of General Lincoln C. Andrews, Assistant Secretary of the treasury in charge of prohibition enforcement, to reach an understanding with Jewish Rabbis on curtailing the sale of sacramental wine and its alleged illegal distribution, reached a conclusion today, when the Commissioner of Internal Revenue promulgated an order of the Secretary of the Treasury to prohibition administrators containing new regulations pertaining to the withdrawal of wine for religious purposes.

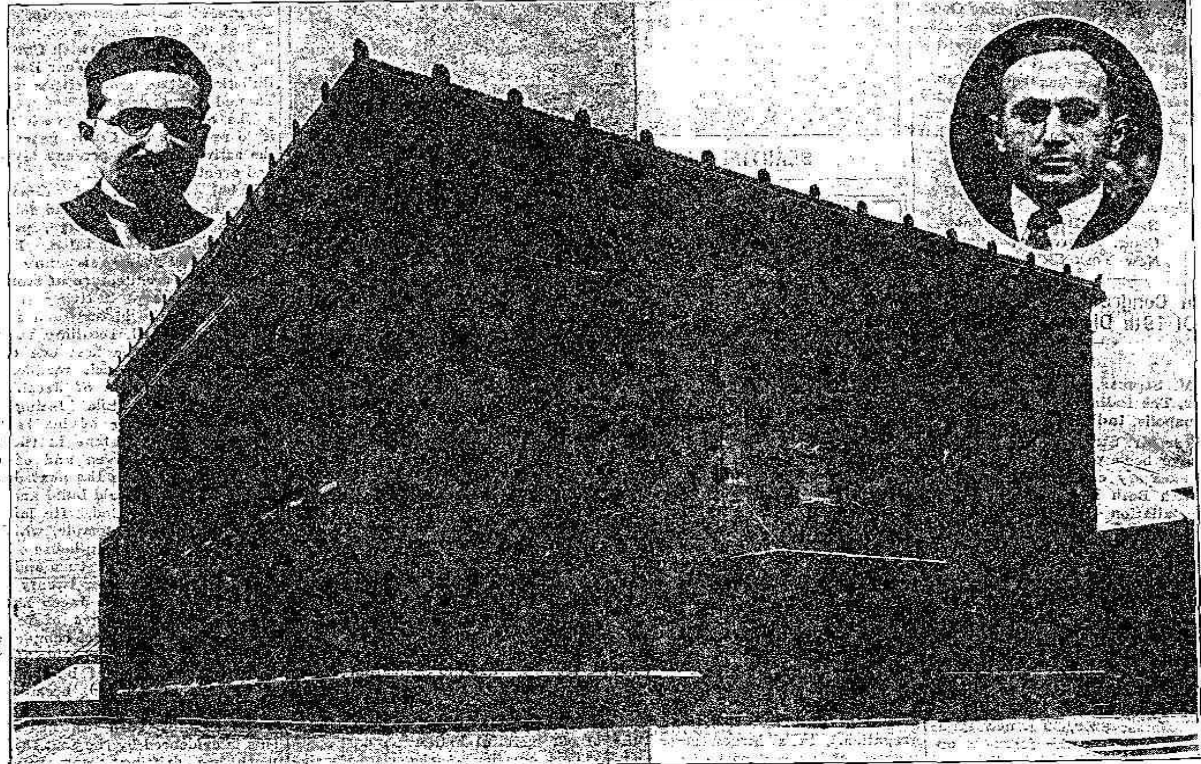
The order and its inclusive regulations were the outcome of conferences between General Andrews and a large number of Rabbis, representing all organizations of their faith. A letter to prohibition administrators, which accompanies the order and was sent to the press this evening, shows that the basic arrangement for preventing abuses in the use of sacramental wine is a list of the names of Rabbis who are recognized bona fide persons claiming to be Rabbis applying for permission to purchase sacramental wine, and their names are not on the authorized list, the government officers will investigate the status.

A check is to be placed also on the amount of wine permitted to be withdrawn. General Andrews says in his letter that all the Jewish religious organizations save the ultra-orthodox have indicated that one gallon per person is sufficient for a year's supply for sacramental uses. The Rabbis state that the ordinary American domestic wine is satisfactory for sacramental purposes.

View of this, prohibition officers will investigate when application is made for the withdrawal of foreign wines.

Letter of instructions. The letter of the Assistant Secretary of the Treasury...

Chanukah Will Mark Dedication of Leading Orthodox Synagogue of Indiana and Installation of its Rabbi



Coincident with Chanukah, the Festival of Lights or Dedication, Beth El Congregation will dedicate its new synagogue at 34th and Ruckle Streets, shown above, with an elaborate program starting with the Friday evening services, December 11th, and culminating with a banquet Sunday evening, December 13th. (The complete program is published on page 3 of this issue.)

At the upper left hand corner is a picture of Rabbi Isidore Goodman, who will be installed in the Friday evening service and will make several talks. Mr. Jack A. Goodman, in the upper right hand corner insert, is President of Beth El Synagogue. He will deliver the acceptance and installation address Sunday afternoon, December 13th, when Mr. Louis Grossman, chairman of the Dedication Committee, will present him with the key of the synagogue.

Addresses of such prominent men as Governor Ed. Jackson, Mayor Samuel Shank, Rev. P. S. C. Wicks, pastor of All Soul's Unitarian church, Rabbi Morris M. Feuerlicht, of the Indianapolis Hebrew Congregation, and Rabbi Herbert S. Goldstein, of New York City, President of the Orthodox Jewish Congregations of America, will feature the celebration.

A special dedication hymn written by Samuel A. Frommer, with music by Rev. M. Fortnov, will be sung Sunday afternoon by the Beth El Choir, led by Abe Barskin.

At 7:30 o'clock Sunday evening a banquet will be held. Mayor Lew Shank will be the principal speaker. Other talks will be made by members of the congregation. It is expected that the largest crowd that ever attended a Jewish celebration will be present at the various services.

A special dedication hymn written by Samuel A. Frommer, with music by Rev. M. Fortnov, will be sung Sunday afternoon by the Beth El Choir, led by Abe Barskin.

At 7:30 o'clock Sunday evening a banquet will be held. Mayor Lew Shank will be the principal speaker. Other talks will be made by members of the congregation. It is expected that the largest crowd that ever attended a Jewish celebration will be present at the various services.

A special dedication hymn written by Samuel A. Frommer, with music by Rev. M. Fortnov, will be sung Sunday afternoon by the Beth El Choir, led by Abe Barskin.

I. O. B. B. DECIDES ON RELIEF FOR JEWS OF DAMASCUS

Executive Com. Also Agrees to Co-operation With Both Drift

ENDORSES WORLD COURT

CINCINNATI, O., Dec. 7.—(J. T. A.)—The first aid for sufferers from the recent bombardment of Damascus will come from America, according to a decision of the executive committee of the Independent Order of B'nai B'rith which began its two annual meeting here yesterday.

The committee voted approving the action of Alfred M. Cohen, president of the organization, in seeking financial help to Damascus Jewry on receipt recently of a cable from the Damascus Lodge of the I. O. B. B. describing their plight.

The executive committee meeting is the first held under the presidency of Mr. Cohen, who was elected last summer. For the next five Cincinnati will be the center of national and international action of the I. O. B. B.

The committee was unanimous in its support of the sending by Mr. Cohen of delegates to the Philadelphia and Baltimore conferences. Mr. Cohen had taken the stand that the B'nai B'rith should co-operate with the Philadelphia group, at Baltimore conference called by Zionists, Henry Monsky, of Cincinnati, and Judge A. B. Fry of St. Louis, led in an interesting discussion of the question. At the conclusion, a resolution was adopted pressing the B'nai B'rith's desiring close co-operation to all Jewish organizations and endorsing Cohen's action. A resolution in the support of all B'nai B'rith for the world court movement was adopted. It expressed the opinion that the entrance of the United States in the world court would be a great step toward accomplishing the Jewish ideal of peace.

Jewish Education Association

Rabbi Martin Ziefonka, of El

DEDICATION

We behold at Beth El a Synagogue building that is a delight to the senses and an encouragement to the soul. But we may not sit back and be content with this great achievement, for the work of our synagogue must go higher and higher....

We are conversant with the fact that it takes time for a tree to grow. So does it take time for an idea to take hold and stir us to sublime action...

May the ancient glory of our people shine forth, as the rising sun, to give warmth and light to mankind.



Jack Goodman, May 5, 1924



CONGREGATION

BETH EL

5684

1924



TEMPLE HERITAGE CENTER
INDIANAPOLIS, INDIANA USA

EXTERIOR

BROWNING
DAY MULLINS
DIERDORF
ARCHITECTS



TEMPLE HERITAGE CENTER
INDIANAPOLIS, INDIANA USA

EXTERIOR

**BROWNING
DAY MULLINS
DIERDORF
ARCHITECTS**



TEMPLE HERITAGE CENTER
INDIANAPOLIS, INDIANA USA

EXTERIOR

**BROWNING
DAY MULLINS
DIERDORF
ARCHITECTS**



TEMPLE HERITAGE CENTER
INDIANAPOLIS, INDIANA USA

EXTERIOR

**BROWNING
DAY MULLINS
DIERDORF
ARCHITECTS**





AREA #1

+5700 SF
EXISTING EPDM
SINGLE PLY OVER
BUILT UP ROOF
AND WOOD DECK



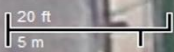
International Life Church

Ruckle St

Ruckle St

Ruckle St

Ruckle St

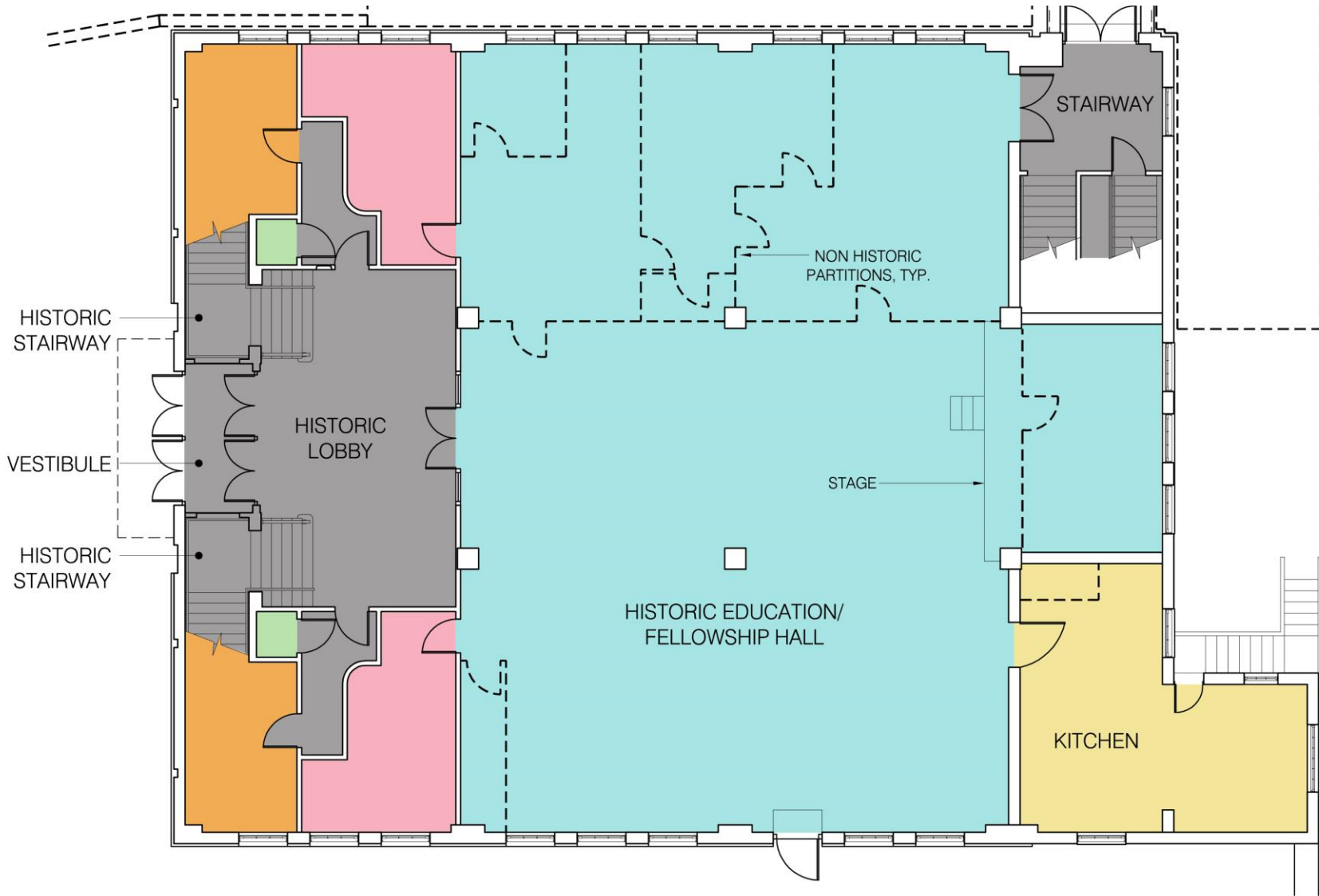


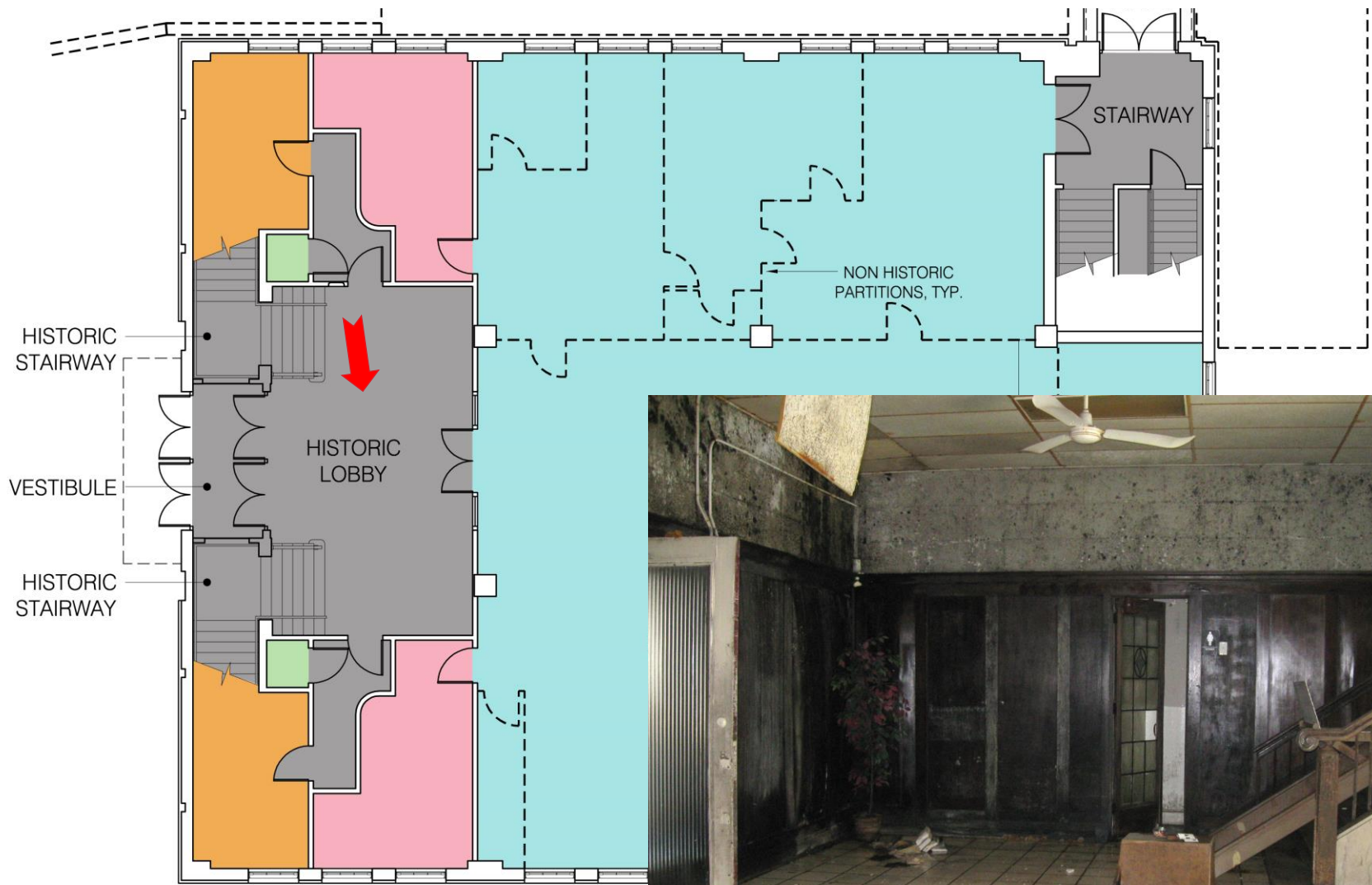


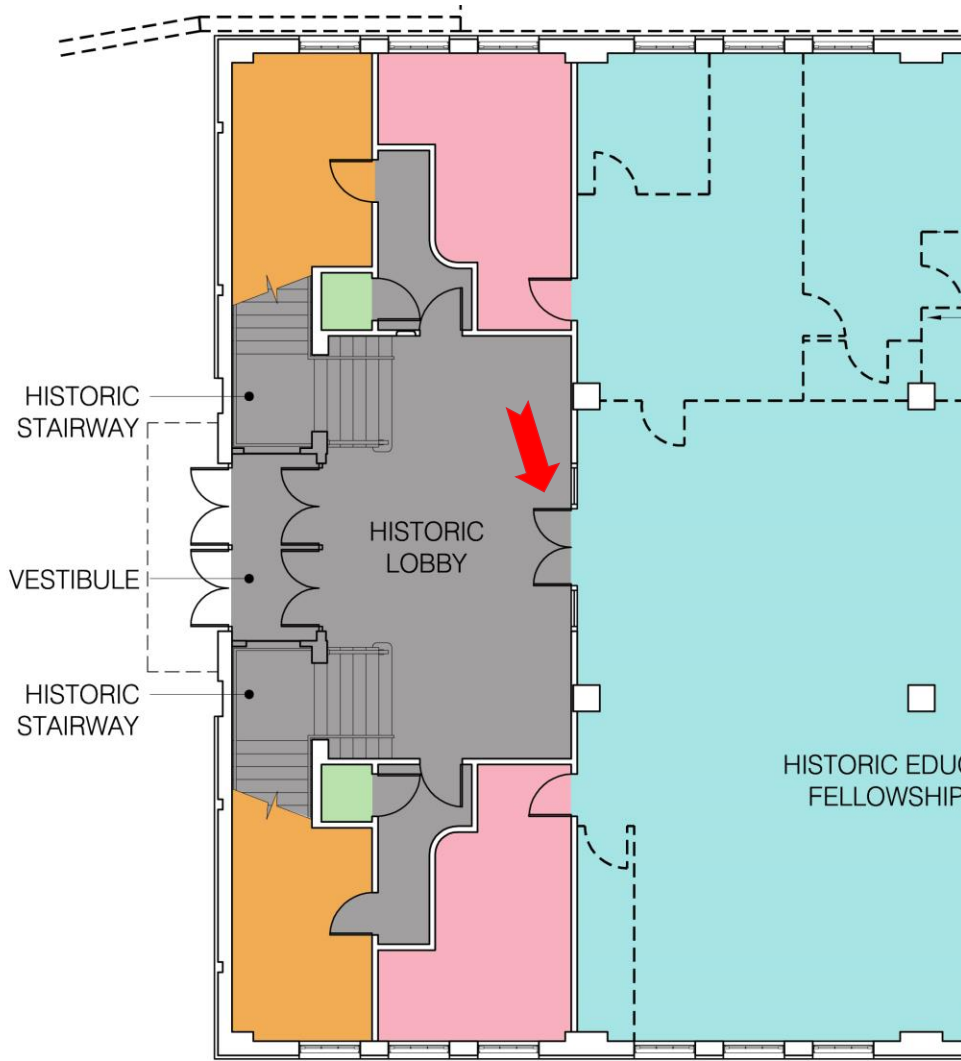
TEMPLE HERITAGE CENTER
INDIANAPOLIS, INDIANA USA

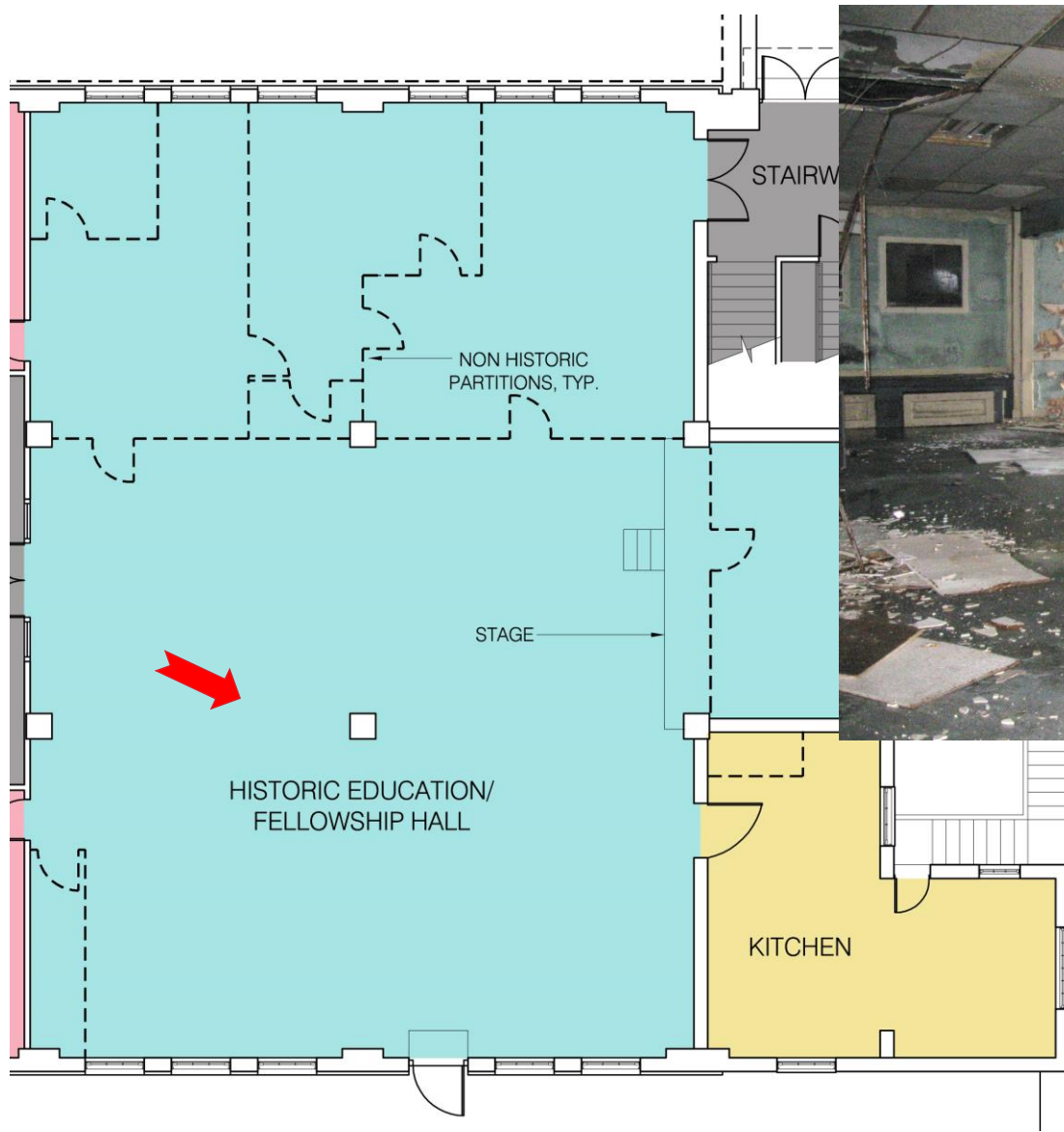
ENTRANCE

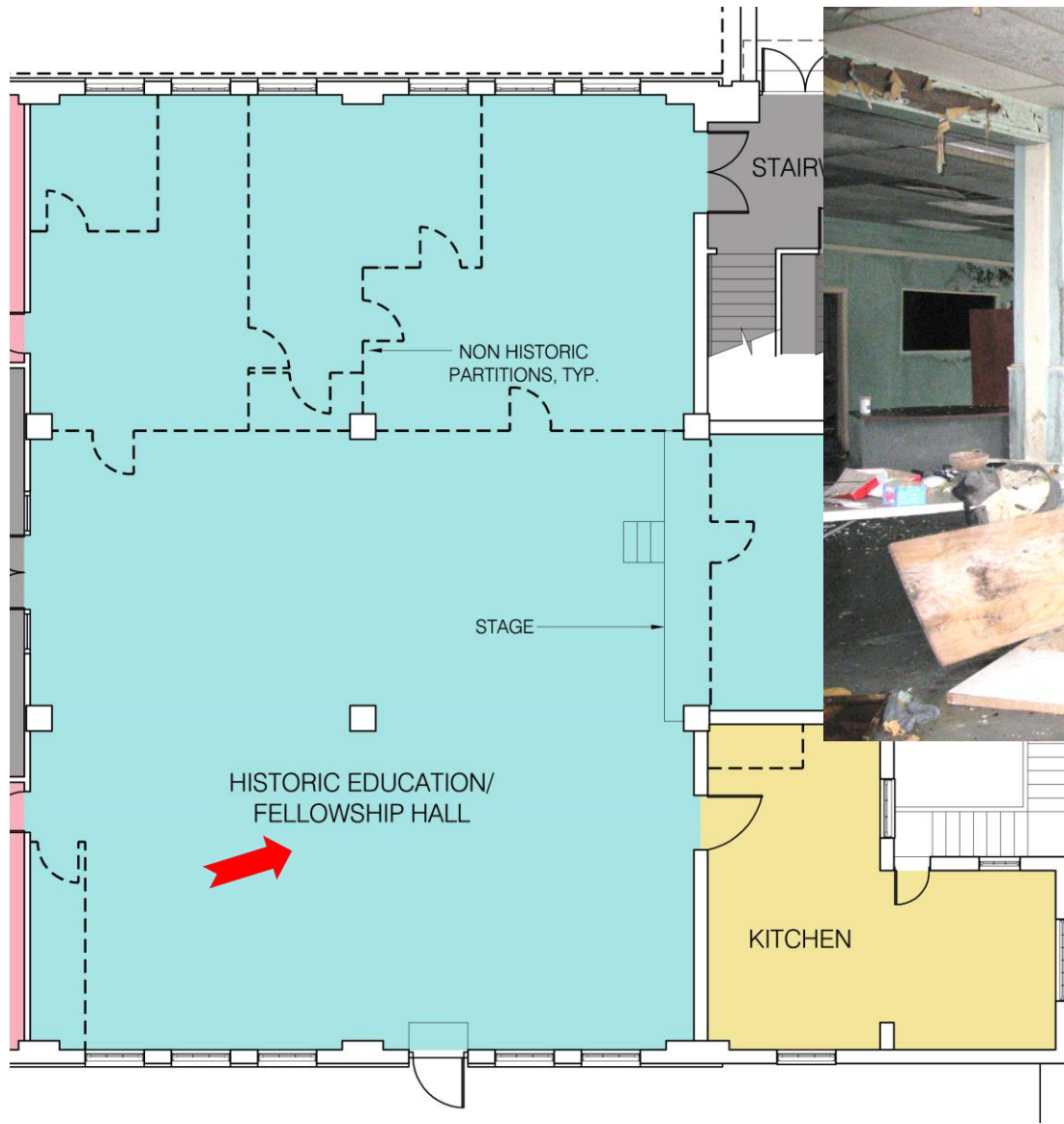
**BROWNING
DAY MULLINS
DIERDORF
ARCHITECTS**

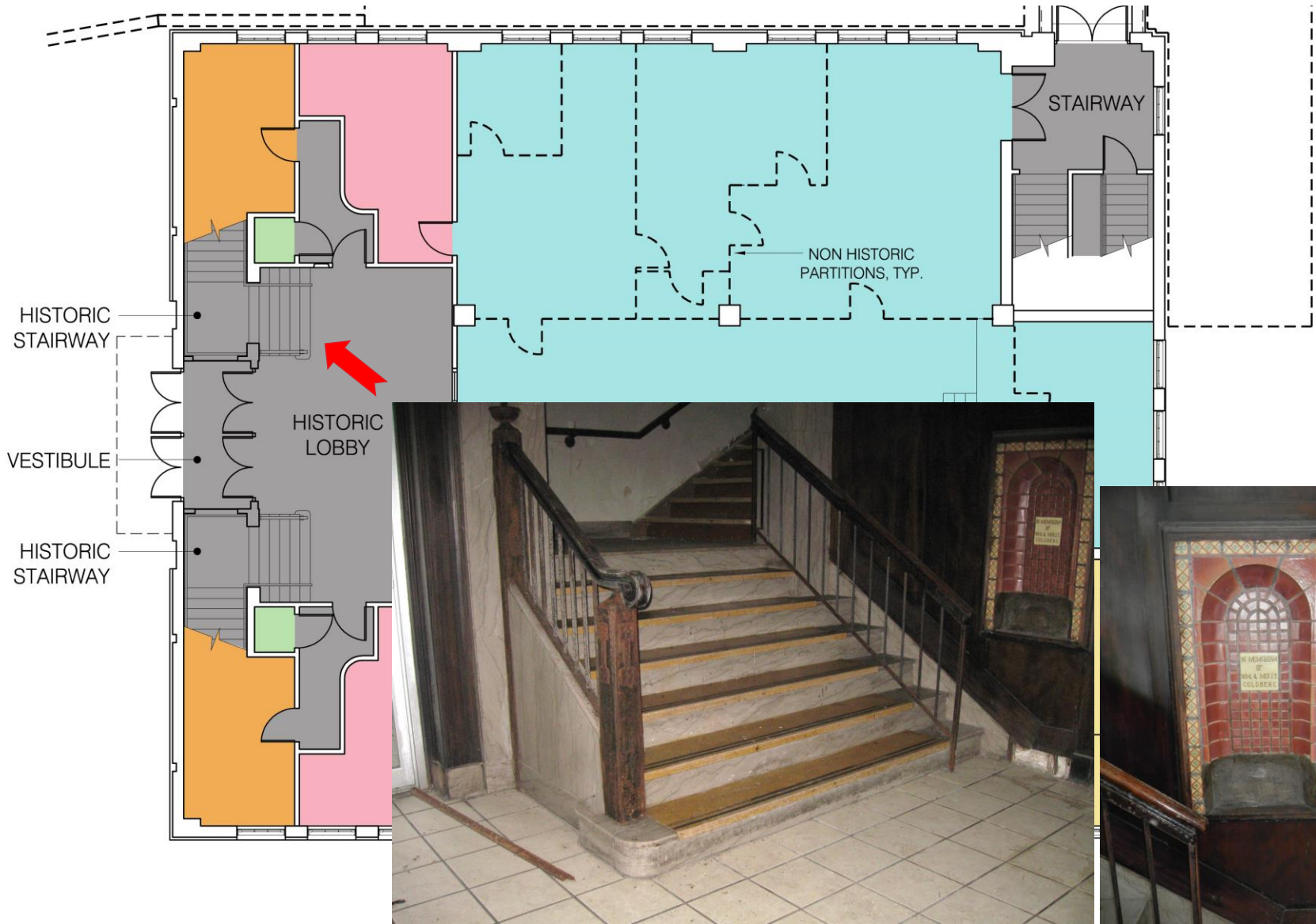


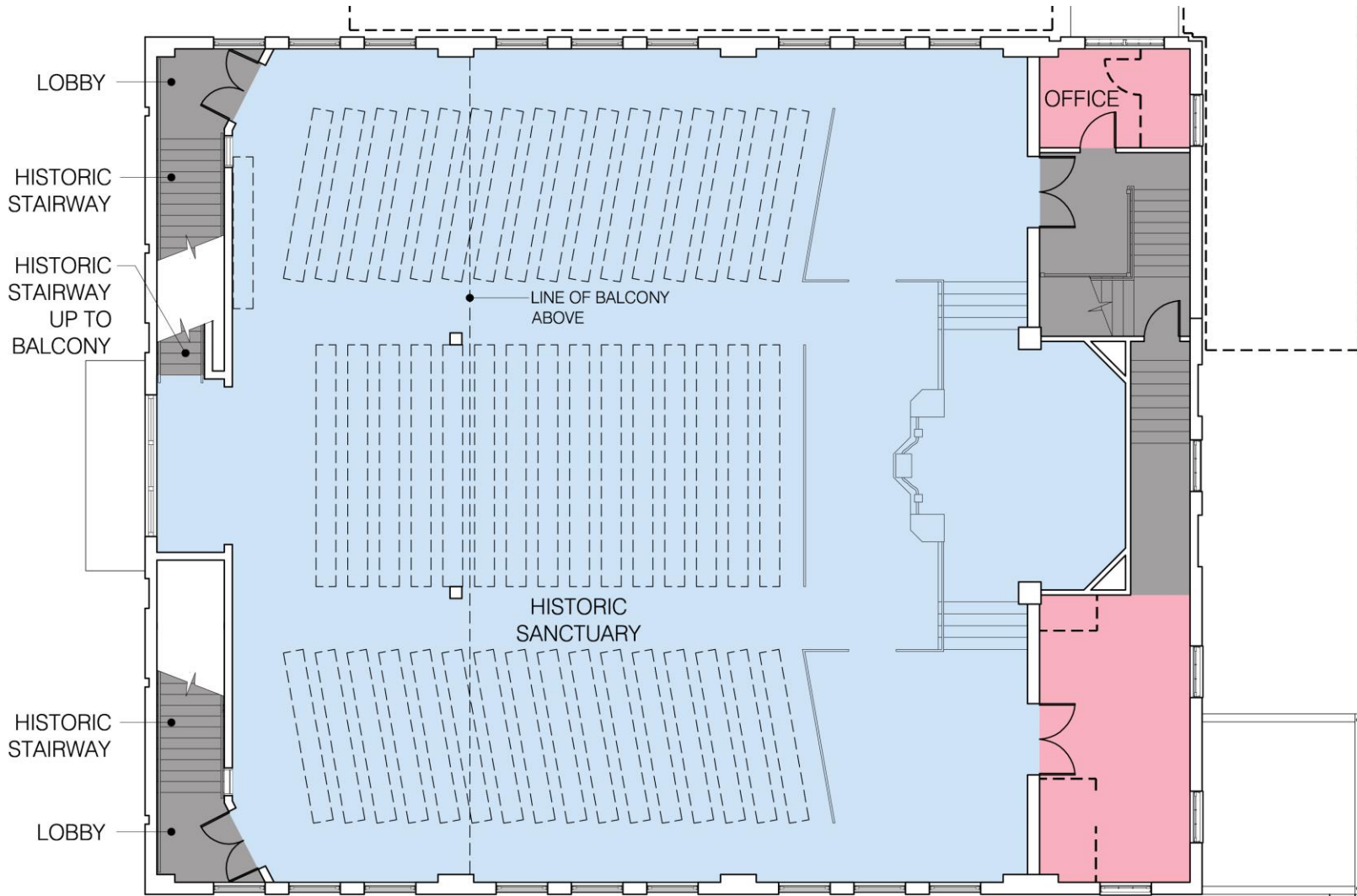










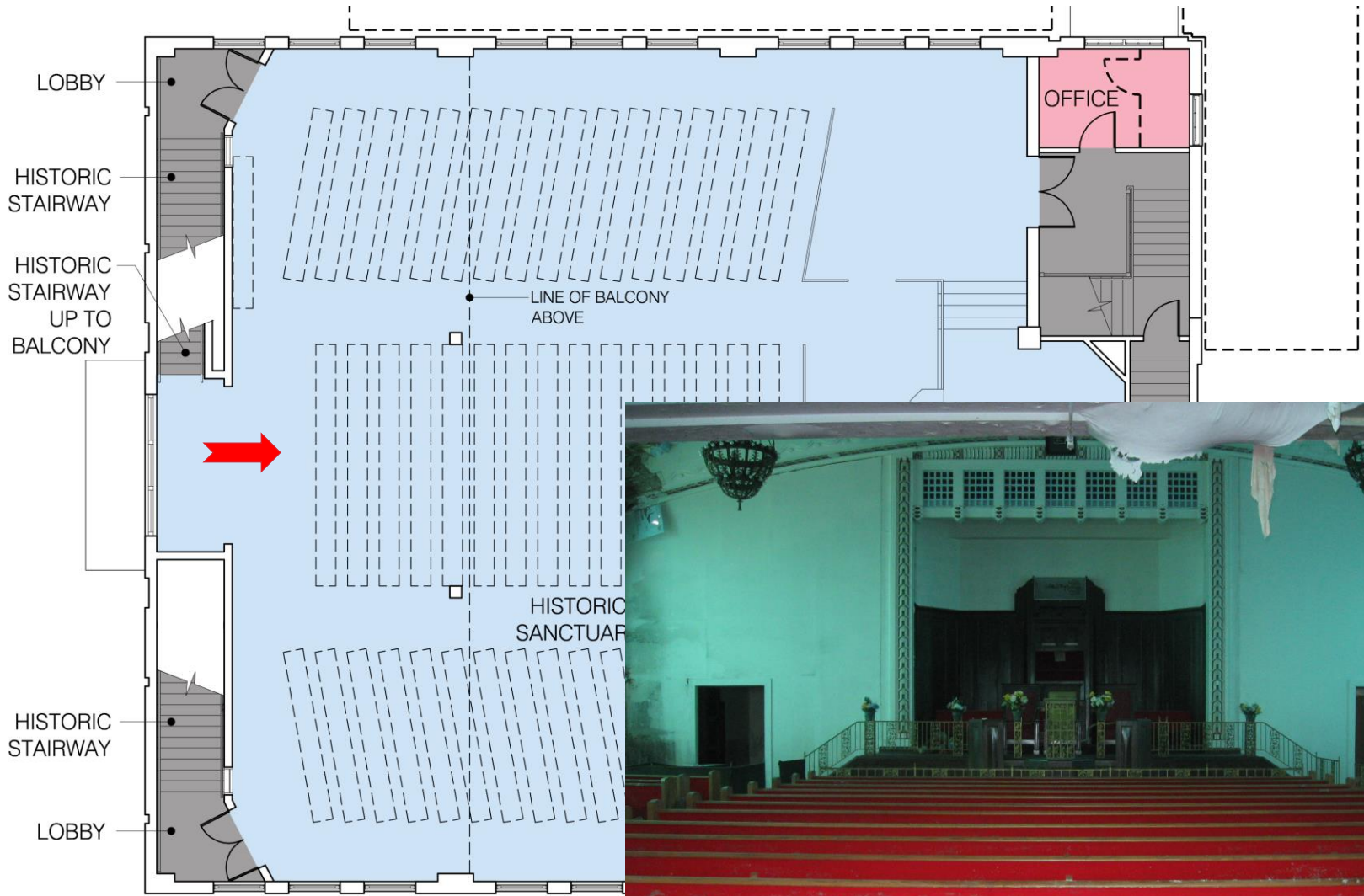


**BROWNING
DAY MULLINS
DIERDORF
ARCHITECTS**

TEMPLE HERITAGE CENTER
INDIANAPOLIS, INDIANA USA

SECOND FLOOR PLAN

**BROWNING
DAY MULLINS
DIERDORF
ARCHITECTS**





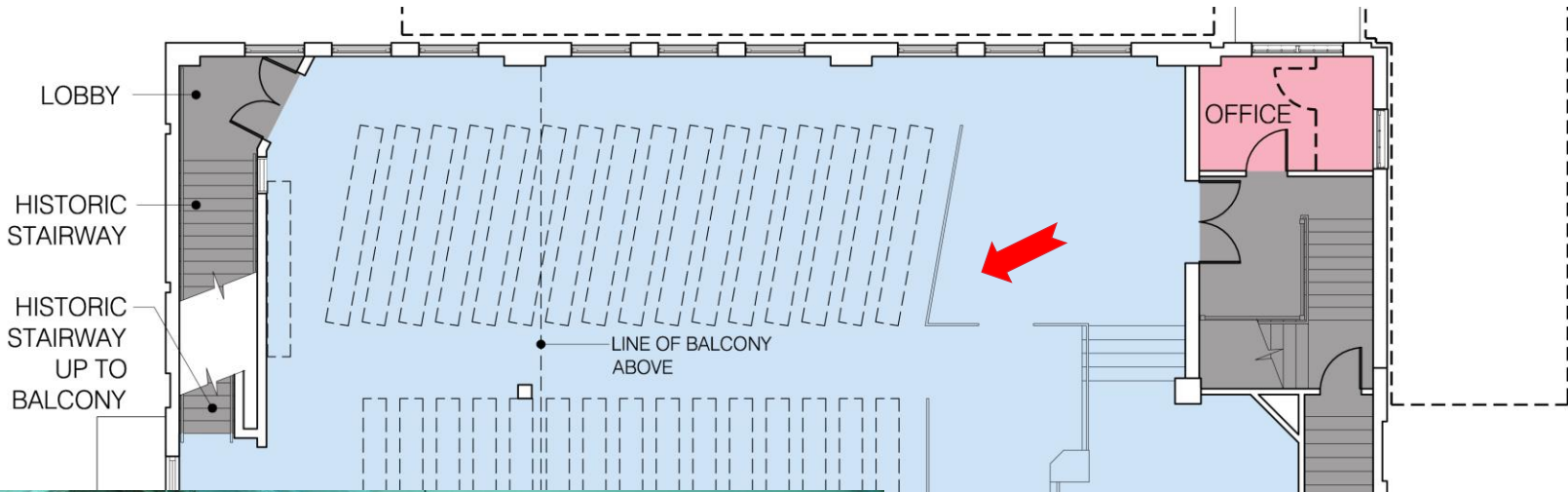
Sanctuary

**BROWNING
DAY MULLINS
DIERDORF
ARCHITECTS**



Fixtures

**BROWNING
DAY MULLINS
DIERDORF
ARCHITECTS**

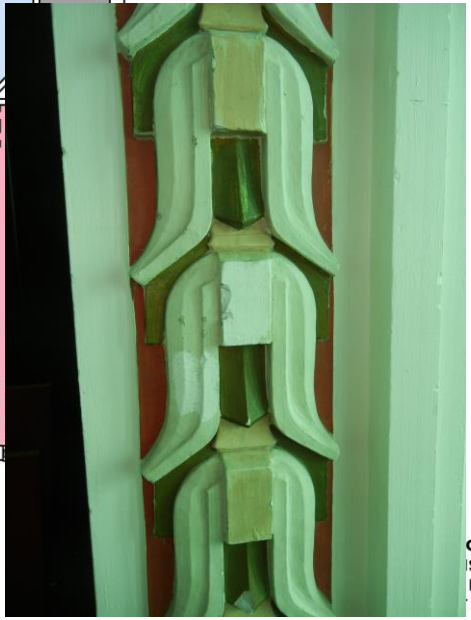
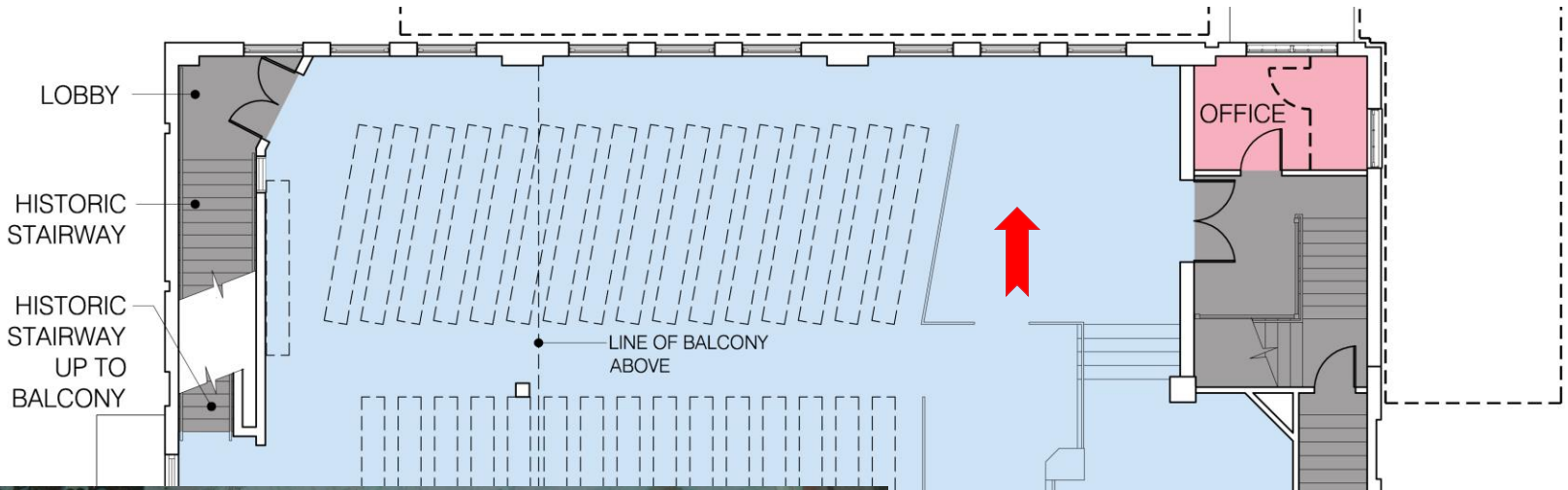


**BROWNING
DAY MULLINS
DIERDORF
ARCHITECTS**

TEMPLE HERITAGE CENTER
INDIANAPOLIS, INDIANA USA

SECOND FLOOR PLAN

**BROWNING
DAY MULLINS
DIERDORF
ARCHITECTS**



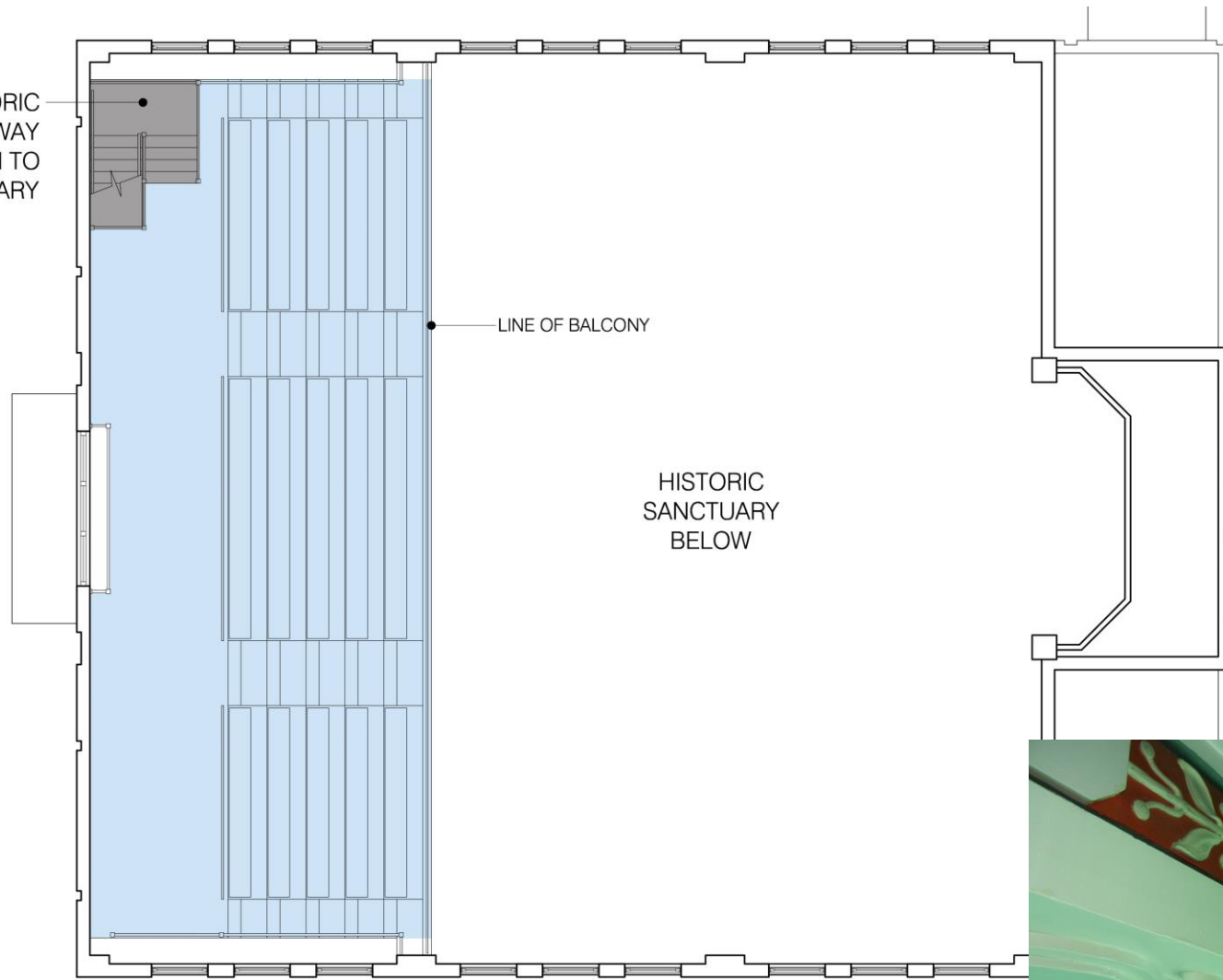
TEMPLE HERITAGE CENTER
INDIANAPOLIS, INDIANA USA

SECOND FLOOR PLAN

BROWNING
DAY MULLINS
DIERDORF
ARCHITECTS

G
S
F
S

HISTORIC
STAIRWAY
DOWN TO
SANCTUARY



BROWNING
DAY MULLINS
DIERDORF
ARCHITECTS

TEMPLE HERITAGE CENTER
INDIANAPOLIS, INDIANA USA

BALCONY FLOOR PLAN

**BROWNING
DAY MULLINS
DIERDORF
ARCHITECTS**



Balcony

**BROWNING
DAY MULLINS
DIERDORF
ARCHITECTS**



Balcony View

**BROWNING
DAY MULLINS
DIERDORF
ARCHITECTS**



Photo Courtesy of Dean Illingworth

Return to Beth El Temple on Ruckle

October, 2011

**BROWNING
DAY MULLINS
DIERDORF
ARCHITECTS**



TEMPLE HERITAGE CENTER
INDIANAPOLIS, INDIANA USA

VIDEO

**BROWNING
DAY MULLINS
DIERDORF
ARCHITECTS**



NOW WHAT?

**BROWNING
DAY MULLINS
DIERDORF
ARCHITECTS**

TODAY

Partners



INDIANA LANDMARKS



Mapleton-Fall Creek
Development Corporation



Supporters

Beth El-Zedeck Congregation; Tabernacle Presbyterian Church; Jewish Federation of Greater Indianapolis; Indiana Jewish Historical Society; Congregation Shaarey Tefilla; Indianapolis Hebrew Congregation; Indiana Historical Society; Efroymsen Family Fund; Beth El-Zedeck Foundation; Neighborhood Associations, Individuals

SO FAR...

Achievements

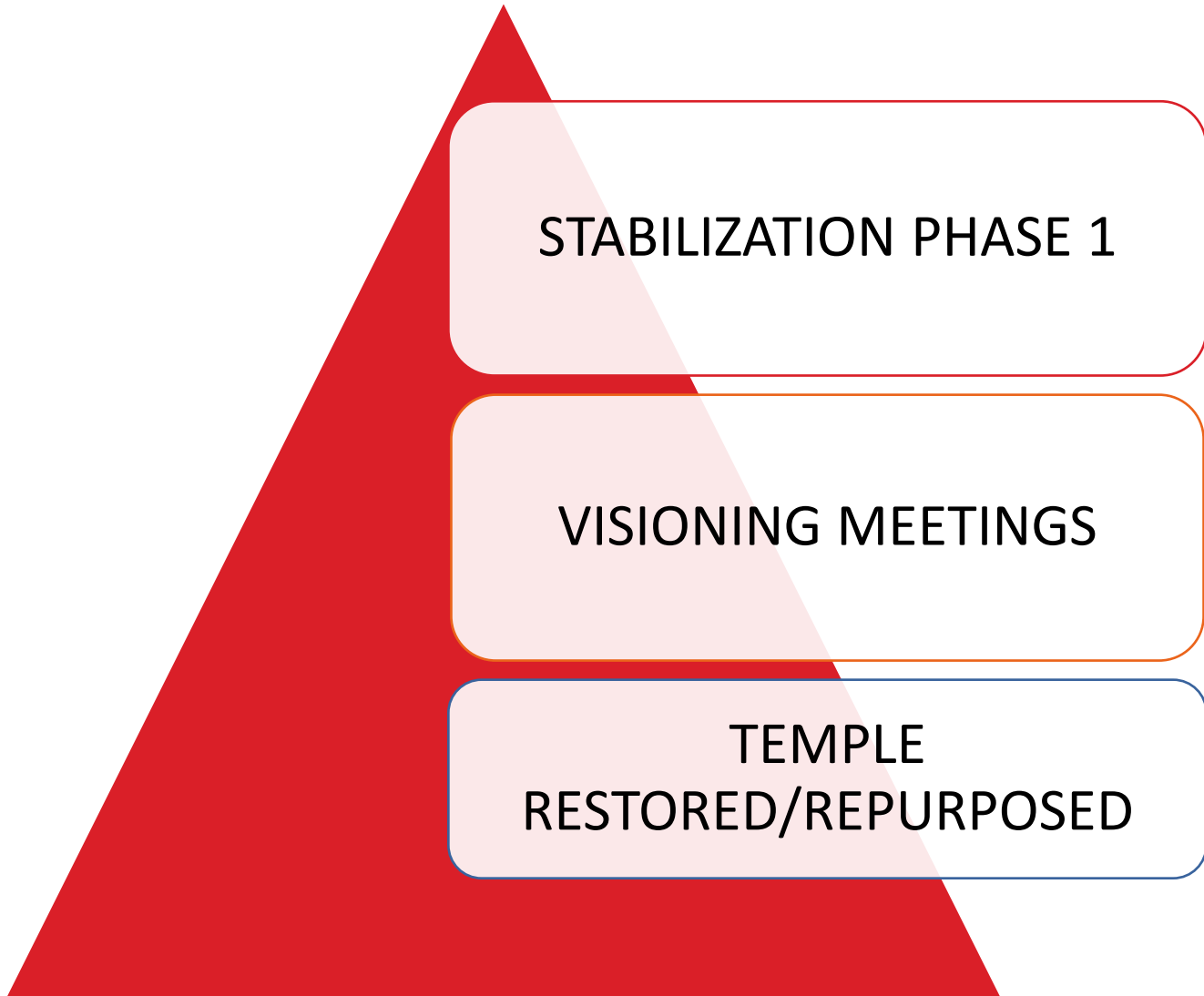
Feasibility Study

Browning Day Mullins Dierdorf

Building Ownership – Indiana Landmarks

Funding for Phase 1 - \$500,000

PLANS...

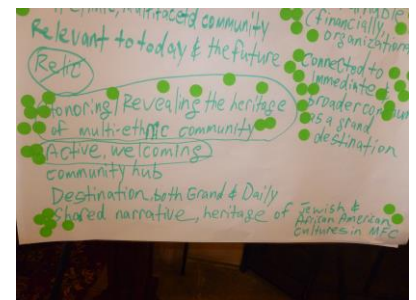
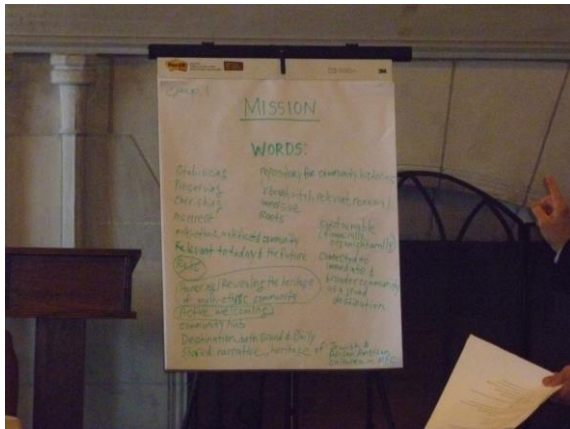


STRATEGIC THINKING – VISIONING

January 24, 2014

Tabernacle Presbyterian Church





Formation of Values

HONOR DIVERSE MEMORY & CULTURAL HERITAGE

ENGAGE AND LEARN

STRENGTHEN COMMUNITIES BY COLLABORATION

MISSION

The Temple Heritage Center will play an integral role as an inclusive place to remember, learn, and connect our diverse communities in a spirit of inspired citizenship.

POSSIBLE VISIONS

Restore the Temple to honor its history and the stories emanating from those who used it and lived nearby; work with like-minded institutions to remember and teach about the heritage the building represents

Create a home base to form a new collaborative platform for our communities and faith-based institutions to connect, welcome, convene, and include in order to foster better understanding and tolerance among people

Stabilize the Temple building in order to arrest ongoing decay and blighting influence in the neighborhood. Remove non-historic additions to reveal the elegant and stately historic architecture so that majestic spaces may inspire future thinking.

OUTREACH



TIMELINE

June, 2014	Roof and Gutters Complete
September, 2014	Completion of Raising a total of \$500,000
December, 2014	Title Transfer from Indiana Landmarks to Temple Heritage Center

BUDGET PHASE 1

3/28/2014

**Temple Heritage Center
Draft Budget
Phase 1
March 21, 2014**

Expenses

Acquisition

Application Fee to Commissioners	1,400
Acquisition From County Commissioners	5,000
Subtotal:	6,400

Stabilization - Itemized in Letter from City

Demolition of non-historic north & southeast additions	15,000
Dry out, inspect decorative plaster & ceiling substructure	2,500
Remove damaged portion of plaster & ceiling substructure	15,000
Remediation of Mold	40,000
Reconstruct Ceiling @ north & west canopy	3,600
Repainting & Repair of West & North canopies & tension rods	5,000
Window restoration main facades	36,000
Window reconstruction main facades	95,000
Project Management & Construction Administration @ 7%	13,797
Subtotal:	225,897

Stabilization - Outlined in Feasibility Study

Reroofing – areas #1, #2, #3, #4	65,000
Roof Deck Repair Allowance	25,000
Brick Masonry Repointing & Cleaning	56,000
Limestone Masonry Repointing & Cleaning	10,000
North Step Repair	10,000
Terra Cotta Masonry Repair	14,000
Project Management & Construction Administration @ 7%	12,600
Subtotal:	192,600

Holding & Maintenance

Mowing and Hauling	2,500
Property Taxes	7,500
Subtotal:	10,000

Soft Costs

Application for 501C3 for Temple Heritage Center	1,350
Community Outreach & Visioning Charrettes	10,000
CDBG Administration	7,000
Subtotal:	18,350

TOTAL EXPENSES:

453,247

Income

MFDCDC Community Development Block Grant (CDBG)	190,000
Efroymsen Grant	10,000
Beth El Zedeck Foundation Grant	10,000
Individual Donations on Hand	1,150
Efroymsen Family Foundation Grant	100,000
MAJOR FUNDS NEEDED	142,097
TOTAL INCOME:	453,247



Beth-El Temple Adaptive Reuse
Northeast Corner

**BROWNING
DAY MULLINS
DIERDORF
ARCHITECTS**

A VISION

**BROWNING
DAY MULLINS
DIERDORF
ARCHITECTS**



TEMPLE HERITAGE CENTER
INDIANAPOLIS, INDIANA USA

A VISION

**BROWNING
DAY MULLINS
DIERDORF
ARCHITECTS**

JOIN US. SUPPORT US.



www.templeheritagecenter.org

hq@double8foods.com

Twitter: @Temple_Heritage

The BOARD: Joseph Alpert, Mark Dollase, Tyson Domer, Leigh Riley-Evans, Alan Goldstein, David Kosene, Kevin Krulewitch, Isaiah Kuperstein, Phil Lande, Jackie Nytes, Al Polin, David Resnick, Ellen Rosenthal, Rabbi Dennis Sasso, Rabbi Sandy Sasso, Elee (Elizabeth) Wood.