

Midtown, Inc.

All Neighborhood Meeting
February 24th, 2014



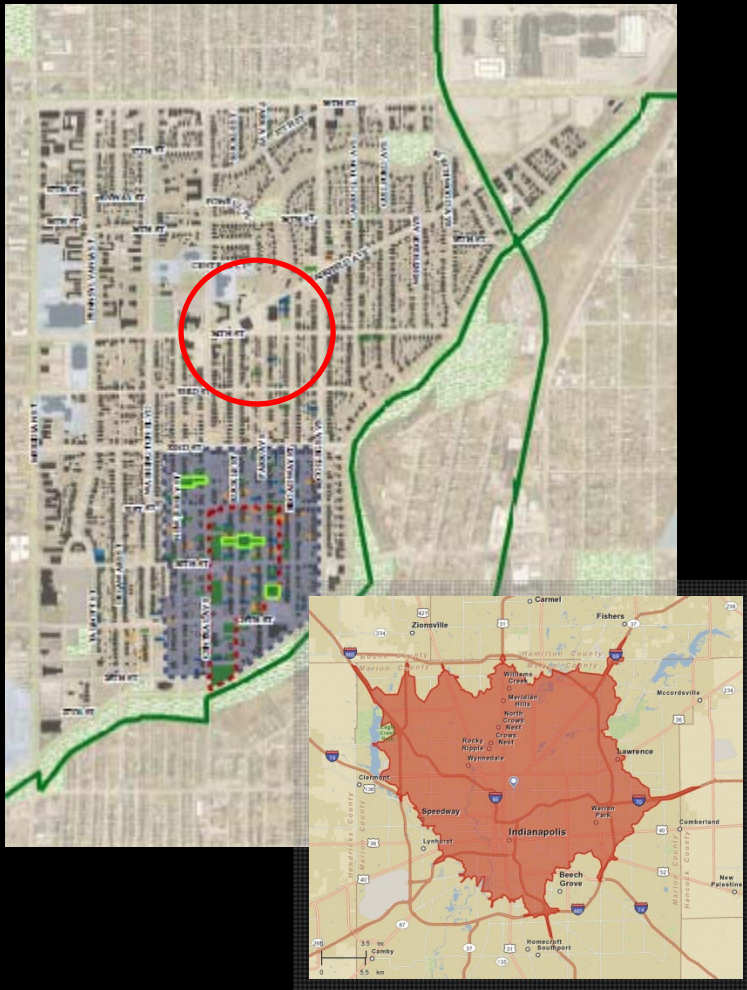
Isaiah Kuperstein

Tyson Domer

Temple Heritage Center Overview

Context

a community hub in the heart of Mapleton-Fall Creek



Beth El Temple

built 1924, oldest extant synagogue in Indianapolis
abandoned ~2006
suffering demolition by neglect...

34th & Ruckle

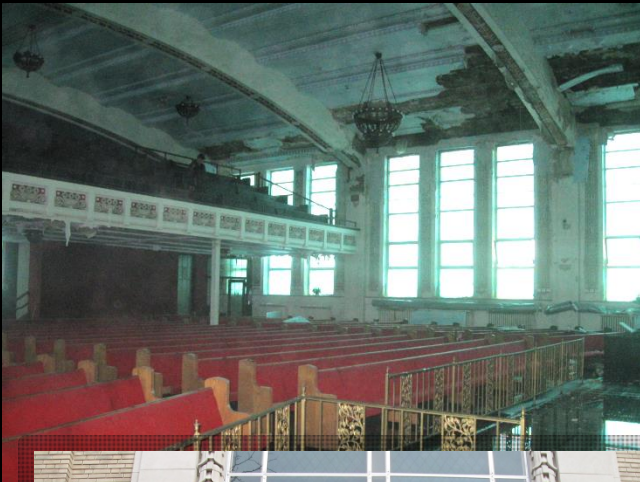
walkable neighborhood destination
centrally located within the I-465 loop

stabilization & adaptive reuse

relevant, vibrant community asset
grand civic destination for the city

Action Plan

Temple Heritage Center, Inc. & partners



stabilization

Indiana Landmarks/Efroymsen Family Foundation
City of Indianapolis/MFCDC
private donors
complete June 2014

community outreach

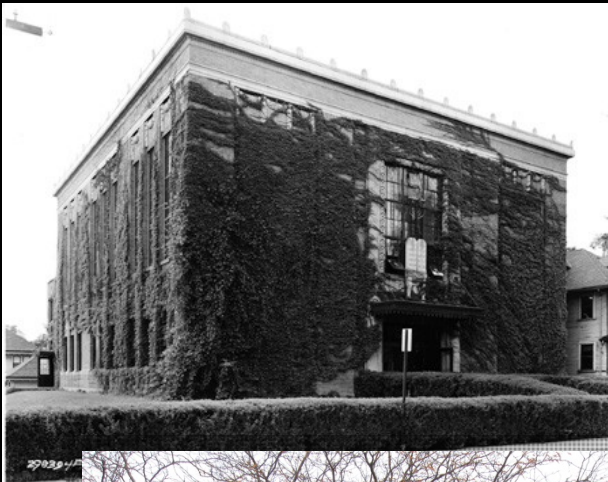
prioritize strategy options
refine end-use scenarios & identify partners

values & vision

historic preservation of Temple
use that honors history, enriches community
financial sustainability

History

oldest extant synagogue in the city of Indianapolis



Vonnegut & Bohn design

completed 1924

Athenaeum – Mass Ave.

Block building – Market & Illinois

Beth El Zedeck congregation

original temple

1925 – 1958

other community uses

Crusader for Christ Pentecostal Temple

Deeper Life Christian Church

International Life Church



TEMPLE HERITAGE CENTER
INDIANAPOLIS, INDIANA USA

ca. 1925

**BROWNING
DAY MULLINS
DIERDORF
ARCHITECTS**



TEMPLE HERITAGE CENTER
INDIANAPOLIS, INDIANA USA

EXTERIOR

BROWNING
DAY MULLINS
DIERDORF
ARCHITECTS



TEMPLE HERITAGE CENTER
INDIANAPOLIS, INDIANA USA

EXTERIOR

BROWNING
DAY MULLINS
DIERDORF
ARCHITECTS



TEMPLE HERITAGE CENTER
INDIANAPOLIS, INDIANA USA

EXTERIOR

BROWNING
DAY MULLINS
DIERDORF
ARCHITECTS



TEMPLE HERITAGE CENTER
INDIANAPOLIS, INDIANA USA

EXTERIOR

BROWNING
DAY MULLINS
DIERDORF
ARCHITECTS

Timeline

Temple Heritage Center, Inc.



2011

formed working group
pursued acquisition from tax delinquent church

2012

engaged Jewish community
feasibility study
National Register of Historic Places application

2013

established Temple Heritage Center, Inc. non-profit
plan for acquisition, stabilization, outreach

Milestone Achievements

Temple Heritage Center, Inc.



BDMD feasibility study

\$450K stabilization

\$2M historic restoration

acquisition

County Commissioners surplus property transferred to Indiana Landmarks for stabilization transfer to Temple Heritage, Inc.

visioning charrette

galvanize board and core supporters

refine reuse strategy options

refine outreach

Next Steps

Temple Heritage Center, Inc.



stabilization

\$290K committed
\$200K available
\$160K funding gap...
complete June 2014

outreach

Mapleton-Fall Creek, Midtown neighborhoods
IUPUI museum studies...
reconcile collective vision & pragmatic possibilities

adaptive reuse

vibrant, relevant community asset
grand civic destination for Indianapolis

Thank You!

Temple Heritage Center, Inc.



Isaiah Kuperstein

ike@double8foods.com

Tyson Domer

tyson@hundredyear.net

Questions?