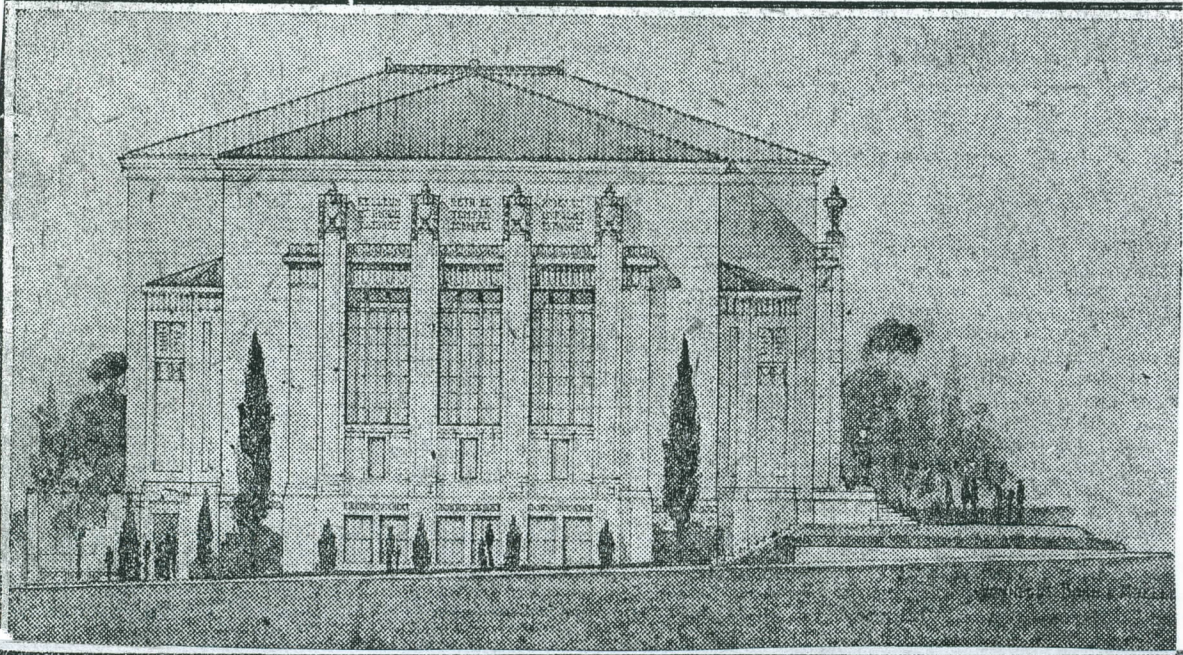


BEAUTIFUL TEMPLE TO BE ERECTED SOON



JEWISH TEMPLE PROPOSED BY BETH EL CONGREGATION.

A new Jewish temple, to house the Beth El congregation, will be erected at Thirty-fourth and Ruckle streets at a cost of \$150,000. Construction work is to begin soon. The temple, a side view

of which is shown, will be erected in units, the first being an auditorium. It also is to serve as a Jewish center and will contain a gymnasium, class and social rooms and all equipment essential

to a social center. The photograph shows the section of the building which is to be erected first. The congregation has temporary quarters in a building at Thirtieth and Illinois streets.